

Headquarters
Emtelle
Haughhead
Hawick
TD9 8LF
United Kingdom

Tel: +44 (0)1450 364000
Fax: +44 (0)1450 364001
E: info@emtelle.com

Emtelle Europe BV
Hoefseweg 1
3821 AE Amersfoort
The Netherlands

Sales Benelux
Tel: +31 85 273 1819
E: jandev@emtelle.com

Sales Germany
Tel: +49 2369 2069436
E: ralfg@emtelle.com

Sales Eastern Europe
Tel: +491736203705
E: hansw@emtelle.com

Sales Rest of World
Tel: +44(0)7515974580
E: remcos@emtelle.com

Emtelle Scandinavia
Vardevej 140
7280 Sønder Felding
Denmark

Tel: +45 86 28 84 88
Fax: +45 86 28 81 52
E: lailanp@emtelle.com

Emtelle Asia Pacific
No. 4, Jalan PJU 1A/8
Ara Damansara
Taman Perindustrian Jaya
47301 Petaling Jaya
Selangor
Malaysia

Tel: +60 (0)3 7845 4406
Fax: +60 (0)3 7845 4459
E: stevef@emtelle.com.my

Emtelle Australia

Commercial Contact : Jason Hanlon
Tel: +61 459173205
jasonh@emtelle.com.au

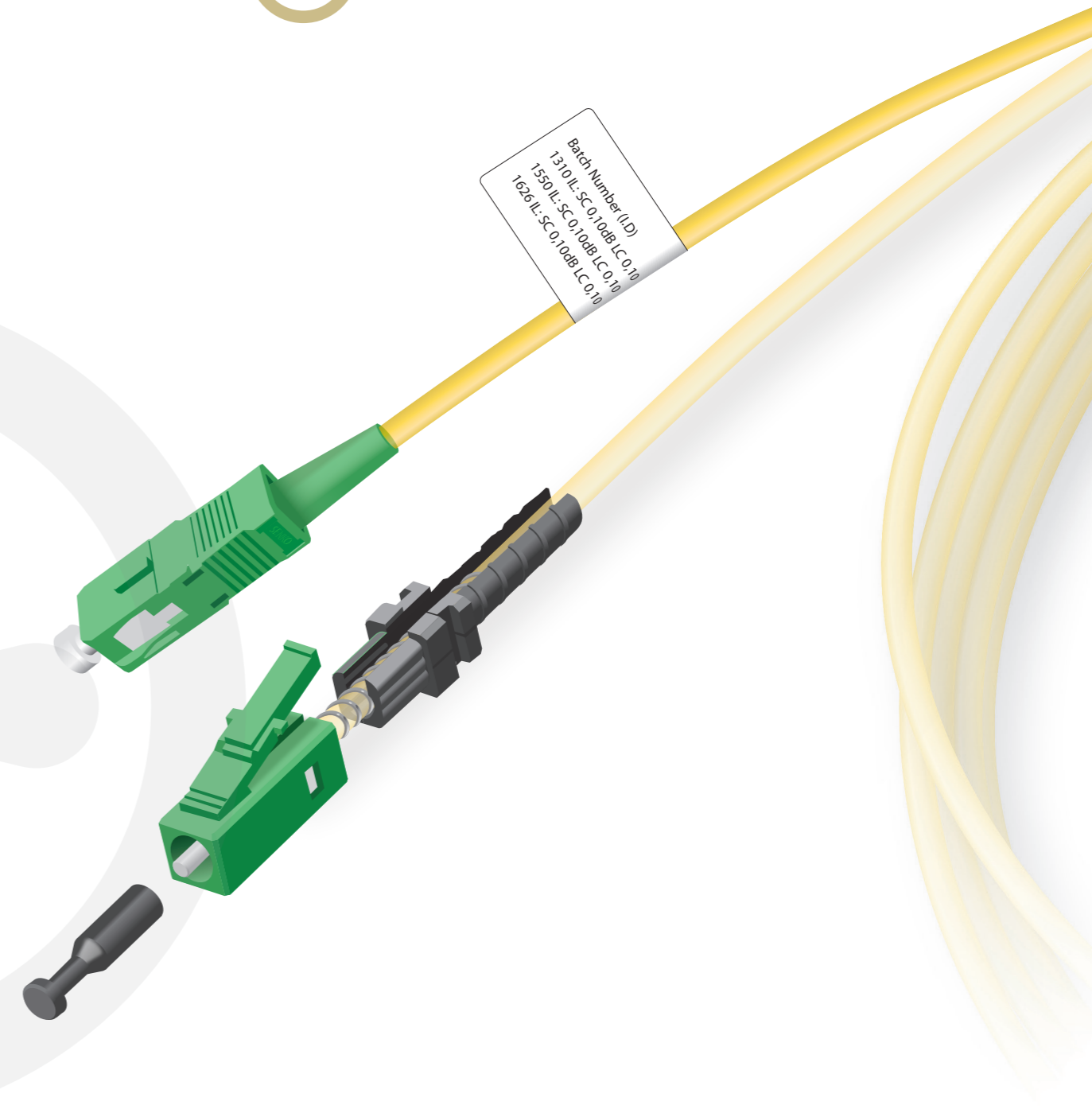
Technical Contact : Graham Morris
Tel: +61 400793300
E: grahamm@emtelle.com.au

Emtelle GmbH
An der Flurscheide 20
99098 Erfurt
Germany

Tel: +49 (0) 361 654 330
Fax: +49 (0) 361 654 33 20



www.emtelle.com
www.fibre-to-the-home.com

 **QWKlink**

Pre-Connected Fibre Bundle

Emtelle QWKlink - Pre-Connected Fibre Bundle

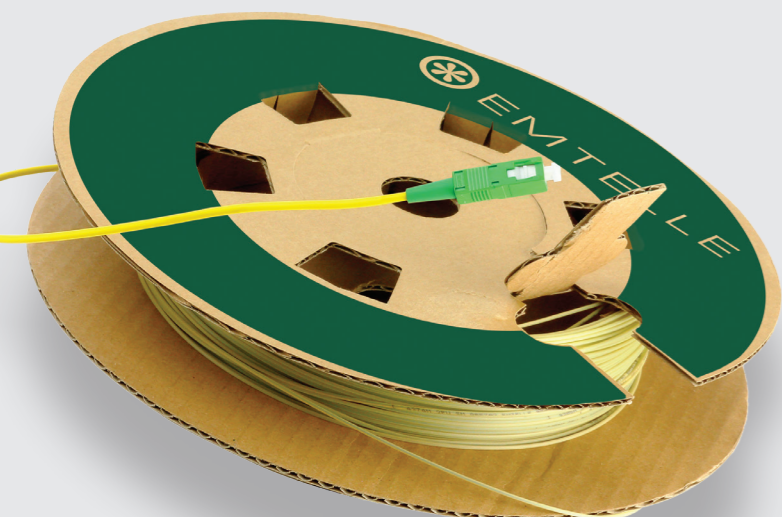
With over 30 years of experience in the FTTx industry, Emtelle is a leading global manufacturer of FTTx Solutions. We have a proven track record, and a reputation for exemplary customer service.

Manufacturing

Manufacturing facilities in Scotland (2), Denmark and Germany with 70,000m² manufacturing space. Fully Integrated – in house manufacture of air blown fibre unit, microducts, optical fibre cables, duct and subduct. Over 20 billion metres of microducts manufactured and sold since 1993 - plus over 3 billion metres of fibre bundle since 2002.

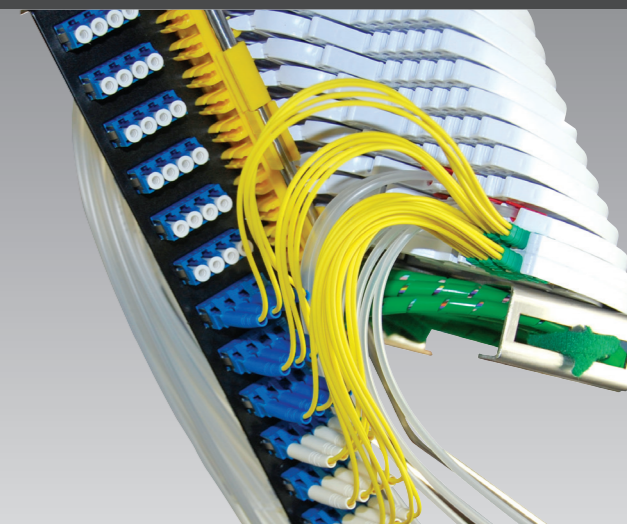


Supplied in various lengths from 25 metres upto 500 metres in increments of 25 metre lengths



Emtelle's pre-connected fibre bundle allows for fibre connectors on both ends, eliminating the need to splice fibres for FTTx drop applications.

The Emtelle QWKlink range of fibre is supplied with an LC Ferrule which can be blown into microducts with a minimum inner diameter of 3.5mm. The LC/APC connector can be field assembled after installation. The opposite end (house connection) is terminated with an SC-APC connector. The pre-ferruled fibre can be blown into microducts that have been directly buried, installed into ducts, installed along walls or into overhead Blown Fibre networks. (Please see Emtelle's QWKDrop range of products). These pre-connected fibre bundles can be blown from 25 metres upto over 1000 metres in new and existing Blown Fibre routes.



The QWKlink products can also be pre installed into the QWKdrop microducts meaning that the pre-connectorised fibre is supplied within a single duct, making it much easier to just lay a Microduct into the route to the home, then just remove excess microduct from the fibre, plug the connector in at the customers termination box (with no blowing or splicing for the customer drop). This Emtelle solution is called QWKconnect.

In an ever-growing FTTH market around the world, FTTx products are required in some countries that require no splicing and they must provide a future pathway to each home for future upgrade and maintenance. No product on the market does this quite like the Emtelle QWK range of products.

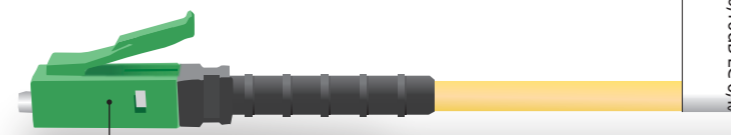
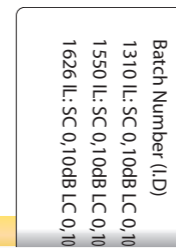
WHY USE QWKlink :

- Can be connectorised at one end or both ends
- SC and LC APC connector options available
- No fibre splicing required for the customer drop
- Extremely small storage area for excess fibre
- Reduced skill set & training required for the install
- Massively reduced capex for installation equipment
- Cost (and space) effective compared to similar products in the market

Labels

A flag type label with the following information shall be wrapped around the fibre at the SC end.

1. Emtelle product code
2. Description and Length
3. Product Batch / Tracking number
4. Insertion and return loss figures at 1310nm and 1550nm for each Fibre Connector



Singlemode Connector Specifications
Grade B Singlemode optical fibre connectors / ferrules conforming to BS EN 61753-1:2007 fibre optic interconnecting devices and passive components performance standard, general and guidance for performance standards.
The physical parameters i.e. end face geometry, etc of the ferrule shall be to BS EN 61755-3-2:2009 Optical interface 2.5mm and 1.25mm diameter Cylindrical Full Zirconia Angled Ferrule Single Mode.

Scan the QR-code with your smartphone and watch the QWKlink video.

