

## FIST Wall mountable Rack

### TELECOM OUTSIDE PLANT

#### Contents

<b>1 Introduction</b>	<b>5 Preparing the rack for cable termination and shelf mounting</b>
<b>2 General</b>	5.1 Position of shelves in the rack(ETSI, 19" ..)
2.1 Kit content	5.2 Changing the CAP position
2.2 Tools	<b>6 Cable termination in rack</b>
<b>3 Unpacking instructions</b>	<b>7 Preparing cable</b>
<b>4 Mounting the WR2 onto the wall</b>	<b>8 Pigtails</b>
	<b>9 Lay-out</b>

---

#### **1 Introduction**

The FIST Wall Mountable Rack, FIST-WR2, is an all-purpose metal indoor rack designed to accommodate the FIST generic shelf family (ETSI and 19").

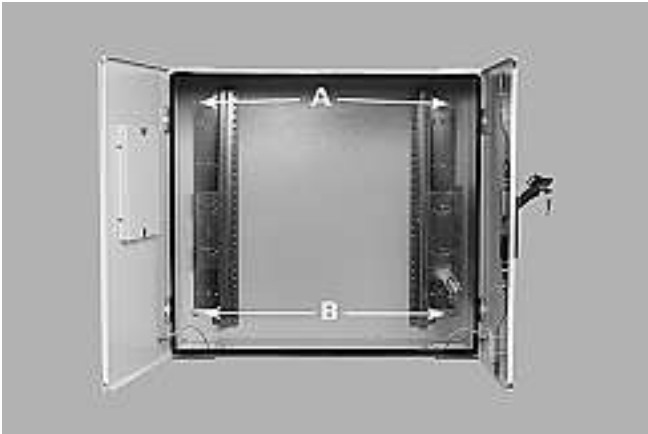
It offers dust-proof, environmental and mechanical protection for the fiber management functions of splicing, patching and passive component integration.

FIST-WR2 is designed for indoor applications and is designed to attach to a wall. A separate wall attachment frame is included in the kit and allows hanging up the rack in a user-friendly way.

To clean FIST components, the use of isopropylalcohol is recommended.

## 2 General

### 2.1 Kit content



- 2 front doors with swing handle and lock with key
- Mounting profiles: field adaptive to 19" or ETSI width
- In top and bottom, left and right 3 plates with the break-outs listed underneath (in total 12 cable entry plates with break-out ports):
  - 6 plates with 2xPG29 break-out ports (top)
  - 3 plates with 4xPG21 break-out ports
  - 3 plates with 6xPG16 break-out portsAll plates have identical outer dimensions and fit in each top and bottom cut-out.
- 1 cable attachment plate with C-profile (no cable clamps)
- 1 wall attachment kit (including installation flier)
- Document holder in the door.

### 2.2 Tools

FACC-ALLEN-KEY-5-350	1 pc	Allen key, diameter 5 mm, length 350 mm for back mounting of shelves in rack
FACC-CAGE-NUT-TOOL	1 pc	For installation of cage nuts in the rack

## 3 Unpacking instructions

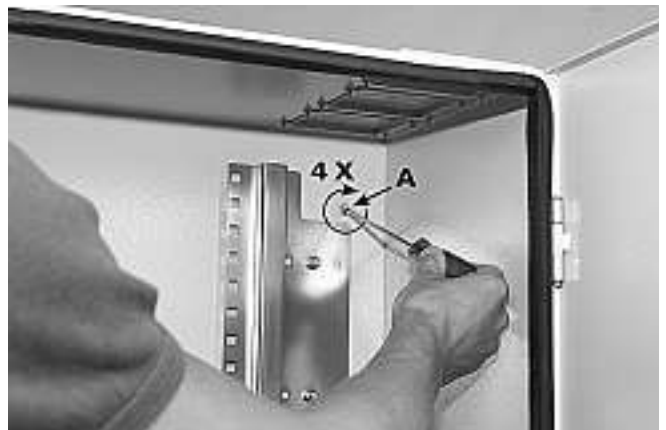


3.1 Open the back of the package. All labels are on the front side. Remove the WR from it.

### 3.2 Removing the wall attachment frame



3.2.1 Open the WR Using the key.



3.2.2 Remove the wall attachment frame by removing the two bottom bolts (B) completely and releasing the two top bolts (A) partly.

## 4 Mounting the WR2 onto the wall

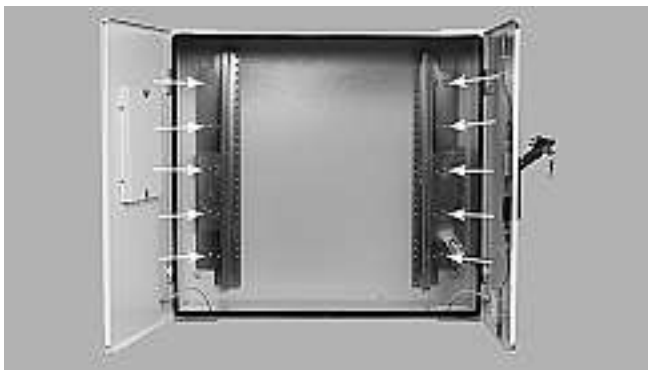


4.1 Place the wall attachment frame against the wall and mark the holes on the wall. Drill the 6 holes and place the plugs. Fasten the wall attachment frame on the wall.



4.2 Hook the rack on the wall attachment frame. Tighten the bolts inside the rack to secure the rack on the wall attachment frame,

## 5 Preparing the rack for Cable termination and shelf mounting



5.1 According to the size of the shelves and the layout of the rack one should mount the uprights in the correct position by removing the 5 nuts.



5.2 The Cable termination plate can be moved up or down, and it can be installed left in the rack, by removing the two nuts. A second CAP can be installed on the preinstalled L-profile.

## 6 Cable termination in the rack

6.1 The cable can be led into and terminated on the cable termination plate in the 4 corners of the rack. However, preference is given to bottom right.

6.2 First incoming cable should be installed at the back side of the rack. The top shelf is the first shelf to install, this to make future installations of more cables easier.

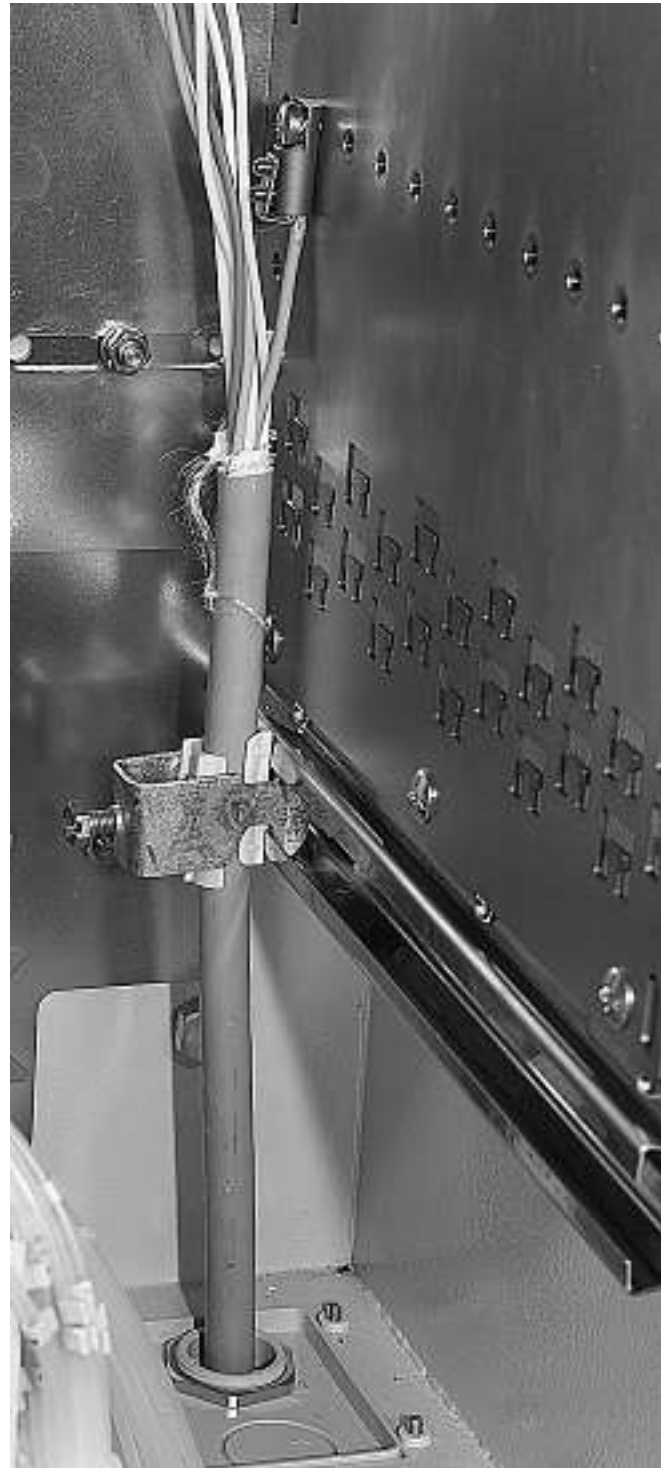


6.3 Select a plate with the knock out ports according the glands to be used. If needed the plates can be changed or moved by unscrewing the 4 screws. Open the knock out ports, using a hammer and screwdriver and install the selected gland.

## 7 Cable preparation and fixation (1 loose tube, IFC and breakout cable)



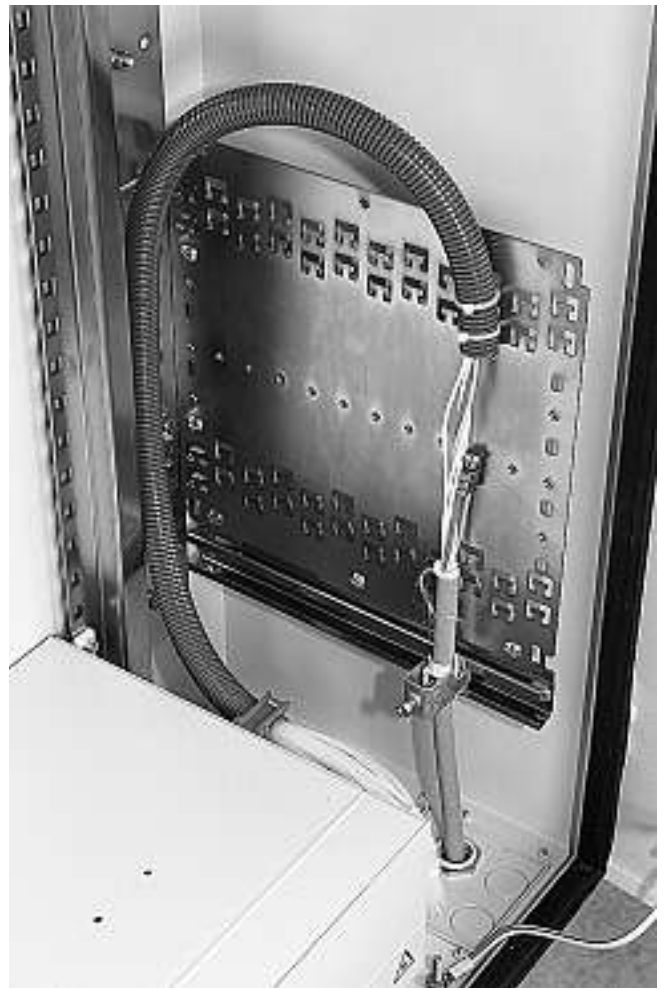
7.1 Open the gland, and adjust the rubber according the cable diameter. Pull 5 m of cable through the gland and rack. Remove the cable jacket. Be sure having 3.5 m of fiber on the FIST-GSS and 2 m on the FIST-GPS, measured at the side of the shelf (see installation instruction of the network element).



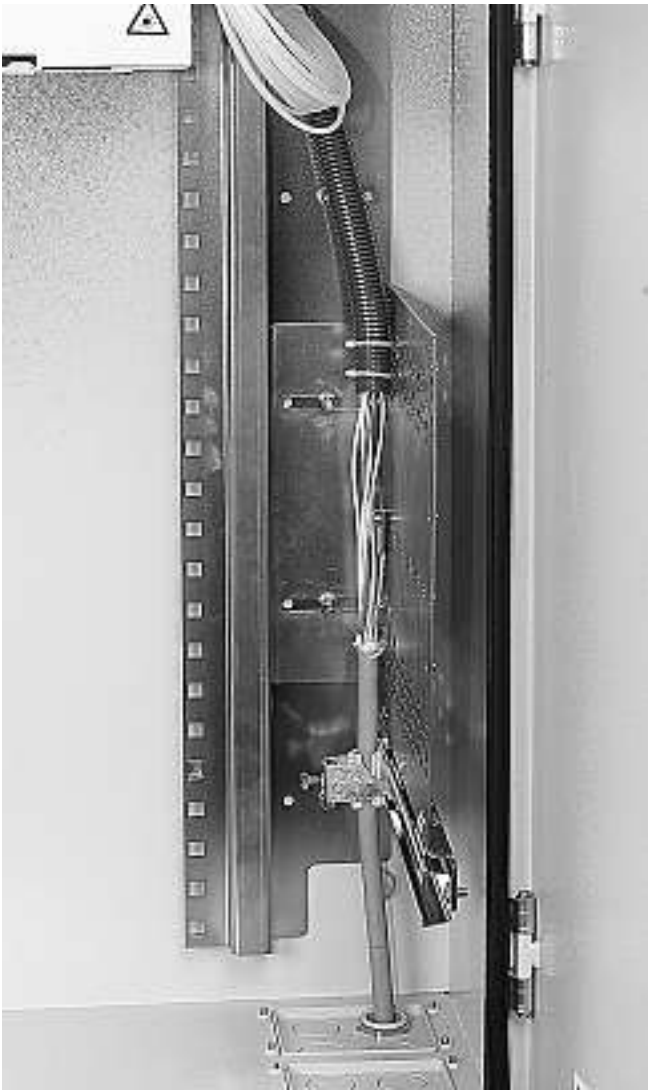
7.2 Cut the strength member on 75 mm. Fix the strength member and cable.



7.3 Cut the flex tube to length and install.



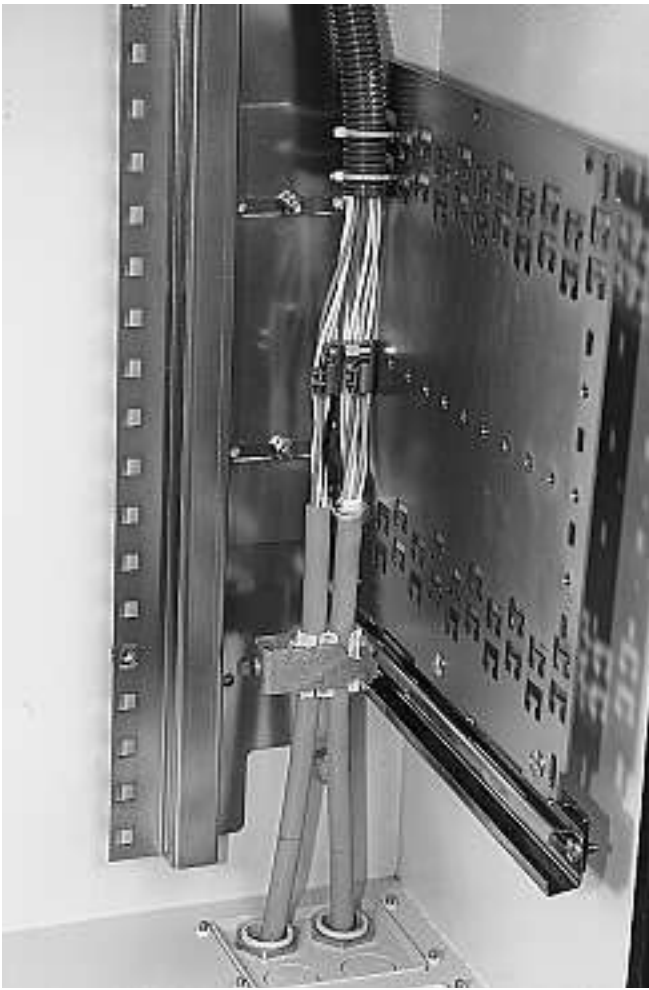
7.4 GSS cable routing example 1 (shelf in bottom position).



7.5 GSS cable routing example 2 (shelf in top position).



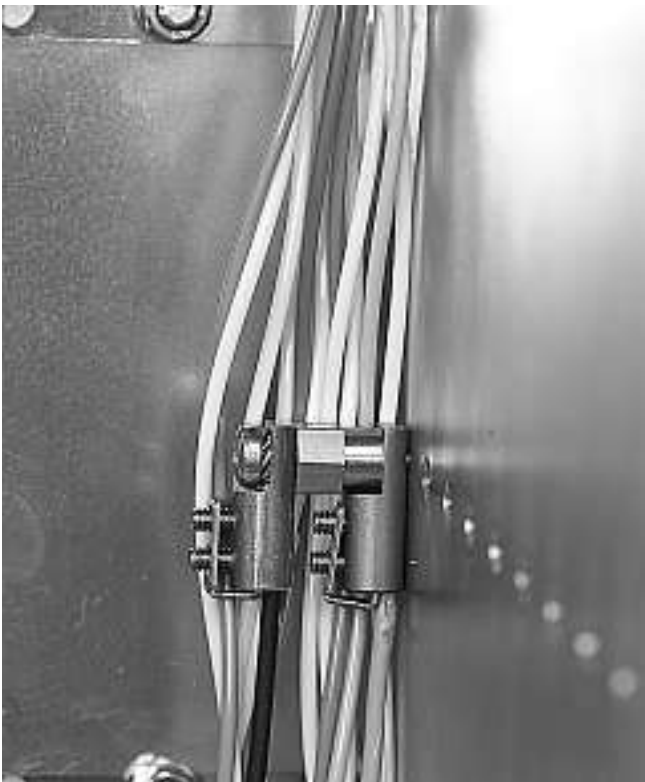
7.6 Using two cable clamps on two cables.



7.7 Using one cable clamp on two cables.



7.8 In case of FIST-GR-CTB100CC mounted



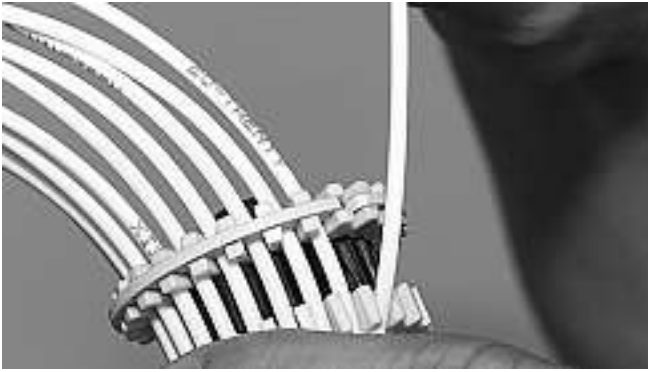
## 8 Pigtails

If pigtails have to leave a sealed rack: (a) pigtailseal(s) should be installed.

8.1 Select a plate with the knock out ports. If needed the plates can be changed or moved by unscrewing the 4 screws.



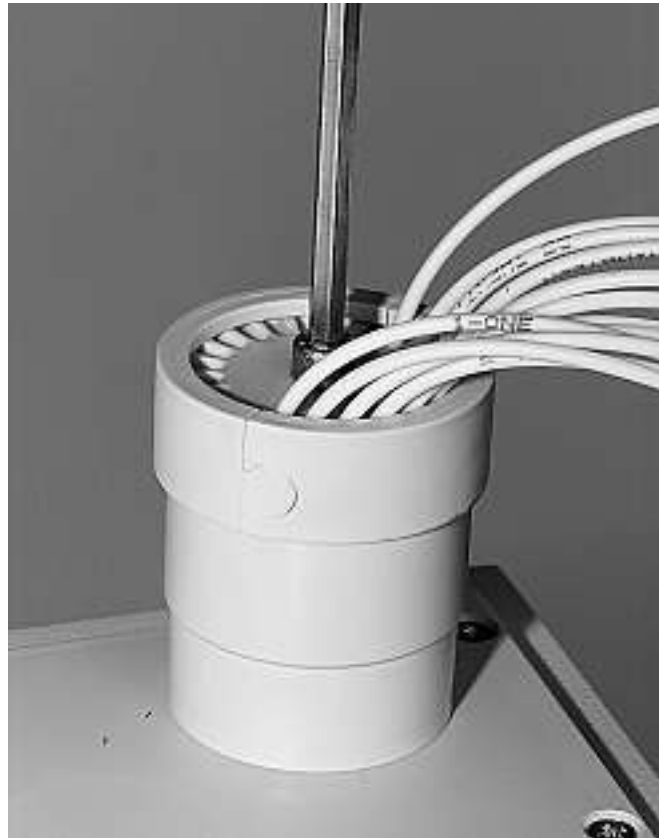
8.2 Open the knock out ports, using a hammer and screwdriver and install the Pigtailseal.



8.3 Take the wraparound pigtailseal and insert the pigtails or jumpers one by one in the selected groove by turning the fixing ring.



8.4 Wrap the rubber sealing ring around the installed pigtails and slide the insert into the housing.



8.5 Wrap the locking ring around the housing and fasten the bolt hand tight by the use of a Allen key.

**Tyco Electronics Raychem NV**  
**Telecom Outside Plant**  
 Diestsesteenweg 692  
 B-3010 Kessel-Lo, Belgium  
 Tel.: 32-16-351 011  
 Fax: 32-16-351 697  
 www.tycoelectronics.com

The information given herein, including drawings, illustrations and schematics which are intended for illustration purposes only, is believed to be reliable. However, Tyco Electronics makes no warranties as to its accuracy or completeness and disclaims any liability in connection with its use. Tyco Electronics' obligations shall only be as set forth in Tyco Electronics' Standard Terms and Conditions of Sale for this product and in no case will Tyco Electronics be liable for any incidental, indirect or consequential damages arising out of the sale, resale, use or misuse of the product. Users of Tyco Electronics products should make their own evaluation to determine the suitability of each such product for the specific application.