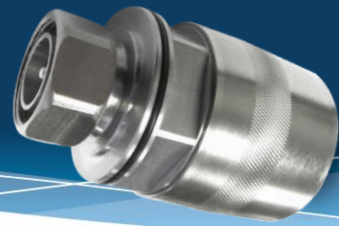


UXP-DM-114



UXP-DM-114 DATA SHEET

7-16 DIN Male Connector for 1 1/4" Annular Cables

Mechanical	Specification	Comment
Pull Force Combined	> 425 lbs 1.89 kN	Cable limited
Cable/Connector Torque	40 ft-lbs 54.2 N-m	Cable limited
Interface Durability	500 Cycles	
Electrical	Specification	Comment
Frequency Range	DC to 3.7 Ghz	
Impedance	50Ω Nominal	
Average Return Loss (VSWR) DTF	>-40dB 0-1 Ghz, >-36dB 1-2 Ghz, > -32dB 2-3.7 Ghz	As per Anatel 75
Insertion Loss	< .1√F(GHz)	
3rd Order IMD	-153 dBc minimum, -160 dBc typical	As per IEC 62037-2, -3
Voltage Withstand	> 3.0 kV	
Shielding Effectiveness	< -120dB	0-1 GHz
Insulation Resistance	10GΩ initial, 100MΩ after conditioning	
Environmental	Specification	Comment
Operating Temperature/Storage Temperature	-55°C to +85°C / -55°C to +85°C	
Interface Moisture	No leakage, mated or unmated > 1.0 Bar	
Moisture Ingress	No leakage	ANSI/SCTE60 2004, IP-67, IP-68, IEC 60529
Corrosion Resistance	1000 Hours	
H.A.L.T.	40 Hours	
General	Specification	Comment
Cable Supported	Andrew AVA6-50, Andrew AL6-50, RFS UCF114-50, LS 33D	
Weight	0.975 lbs. 442.3g	
WPS Weather Protection	WPS-6	
Length	2.720" 69.1mm	
Outer Diameter	2.110" 53.6mm	
Hex Width	1.25" 32mm	
Tools	Specification	Comment
Cable Preparation	SP-114	
Connector Compression	HCG-FRAMESET-114, HCG-CC	
Torque Wrench	TQ-114-F18	18 ft-lbs 24.4 N-m