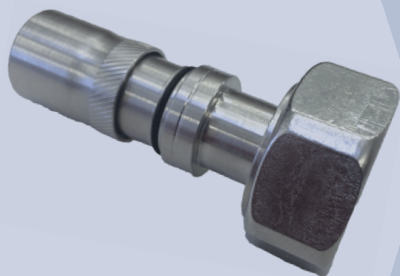


## Connectors Supported



UXP-DM-14S  
UXP-DF-14S  
UXP-NM-14S  
UXP-DRA-14S  
UXP-NRA-14S  
UXP-MRA-14S  
UXP-MDM-14S  
UXP-4MT-14S  
UXP-4F-14S  
UXP-4RT-14S

Always wear  
safety glasses  
when operating  
tools.

## Tools/Materials



TW1412  
Torque Wrench  
N-Male



TQ-114-F18  
Torque Wrench  
Din-Male



12" Adjustable  
Wrench



SP-CC



RDCUTTER-S



Safety Glasses



T-Handle



HCG-FRAMESET-1/4

HCG-CC



Alcohol Wipe



TQ-78-F8  
Torque Wrench  
4.1-9.5 Male  
4.3-10 Male



Power Drill

## Step #1: Prep

*With a few simple steps, JMA compression connectors can be easily and consistently installed on 1/4" cable.*



Straighten cable. Use RDCUTTER-S, applying even pressure around cable while rotating tool around cable to cut off cable squarely.



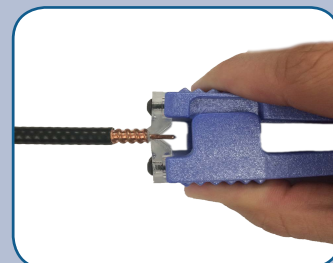
Attach prep/strip tool to drill. Be sure you are using an SP-14S tool.



Actuate drill to remove jacket and expose the center conductor. Then remove cable from tool.

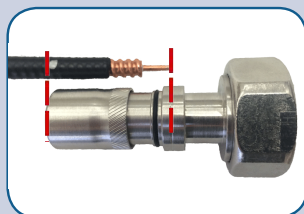


Proper prep is achieved when center conductor is chamfered as shown.



Use center conductor cleaner ("SP-CC tool") to remove any remaining dielectric material on center conductor.

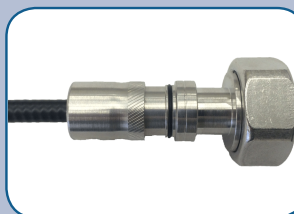
## Step #2: Install



Align center conductor as shown with groove on the body. Mark cable jacket (using pen or marker) in line with end of connector.



Use alcohol wipe to clean inner and outer conductors thoroughly.



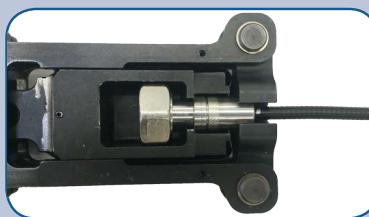
Thread connector onto cable until it reaches alignment mark and until snug (do not over tighten).



## Step #3: Compress



Pull/push back the frameset to allow connector/cable to lay flat in frame.



Make sure connector is fully seated. Press HCG tool trigger until gun cycles. Do not pull or push on tool during compression.



When fully compressed, connector will move away from alignment mark.

## Step #4: Torque



When using the torque wrench, make sure the mating connector is supported by an adjustable wrench.

Series	Torque (in. lbs.)	Hex Nut Size
N	14 (1.2 ft-lbs)	3/4"
7-16 DIN	216 (18 ft-lbs)	1-1/4"
4.1-9.5 / 4.3-10	96 (8 ft-lbs)	7/8"

Use proper torque based on the type of interface.

Mobile-enabled:  
JMAqr.com



Scan for install video.

### Cable preparation guide



Compare to picture to determine if correct cable prep was performed.  
(For reference only)