

FACT CABLE TERMINATION UNIT (FACT-ACCCTUMIFC)

Contents

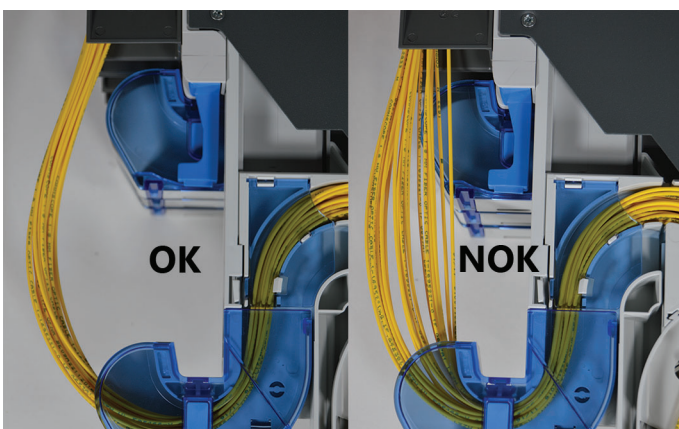
1. General product information	1	5.3. Cable preparation with central strength member	3
2. Warnings and caution	1	6. Routing and termination on FACT-xESPL (splice element)	4
3. Product images	1	7. Routing and termination on FACT-xExHP (splice/patch element)	6
4. Kit content	2	8. Trademarks	8
5. Cable preparation	3	9. Contact Information	8
5.1. General cable preparation	3		
5.2. Cable preparation without central strength member	3		

1. General product information

- The IFC cable termination unit is designed to accommodate IFC cables with a maximum cable diameter of Ø 15 mm.
- The cable needs to be flexible enough to allow a bend radius less than 75 mm for IFC cable strength members with a diameter less than Ø 2.5 mm.
- The kit contains all parts to terminate 1 IFC cable on 1 FACT element (max. 48 x 900 µm).

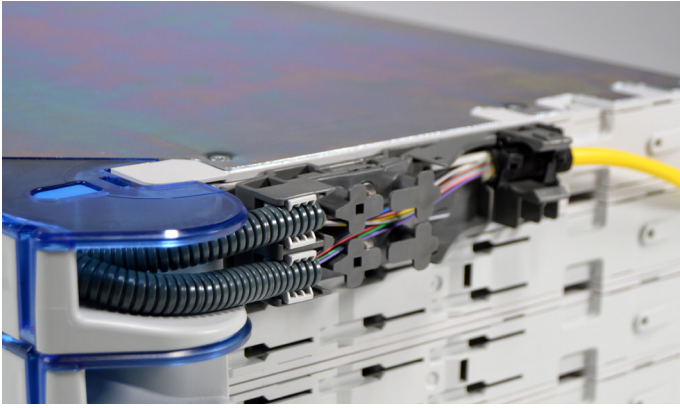
2. Warnings and caution

- Fiber optic cables may be damaged if bent or curved to a radius that is less than the recommended minimum bend radius. Always observe the recommended bend radius limit when installing fiber optic cables and patch cords.
- Exposure to laser radiation can seriously damage the retina of the eye. Do not look into the ends of any optical fiber. Do not assume the laser power is turned off or that the fiber is disconnected at the other end.

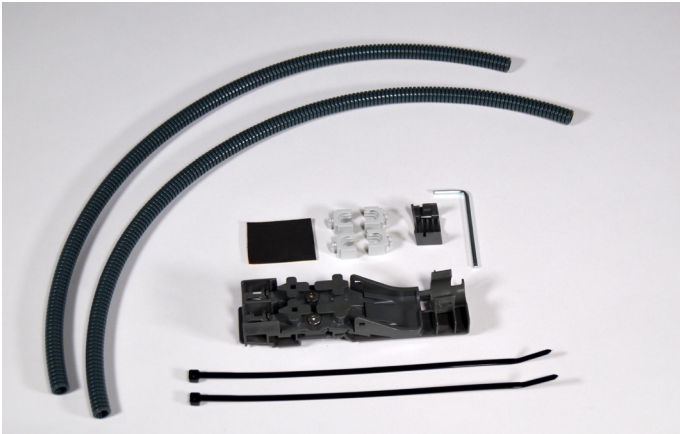


- Pay attention to the routing of the patch cords. These should move/hang freely, where they leave the bend control. If you see that there is tension occurring on the patch cords, please reroute these.

3. Product images



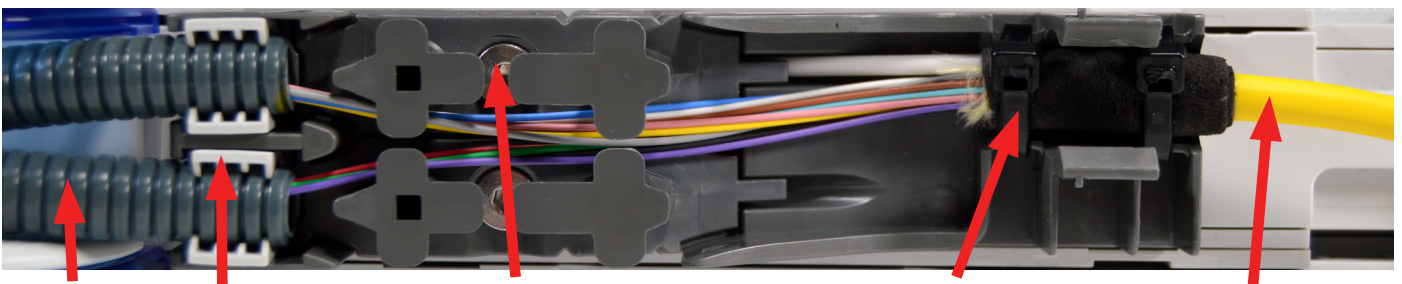
4. Kit content



- 1x Cable termination unit medium
- 1x Cover for flextube Ø 12 mm
- 2x Flex tube 430 mm
- 4x Flex tube holders for flex tube
- 1x Foam
- 2x Tie wrap black
- 1x Allen key

Note: Check kit content and length of flex tubes before installation.

For FACT-xExHP 430 mm is ok, cut these to 410 mm for FACT-xESPL!

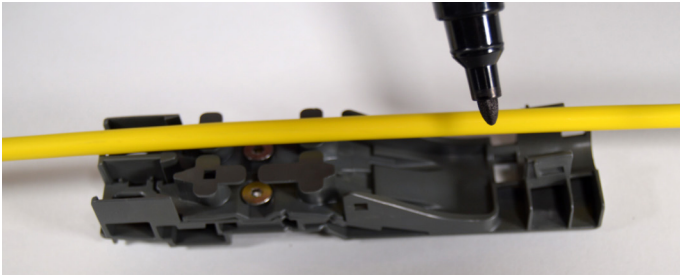


Flex tube Flex tube holder Strength member holder Tie wrap+Foam IFC Cable

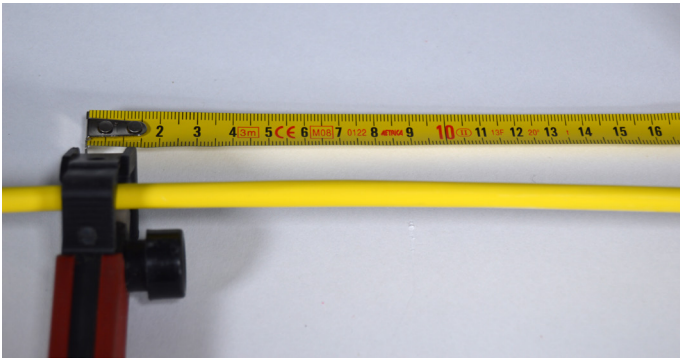
Example when installed.

5. Cable preparation

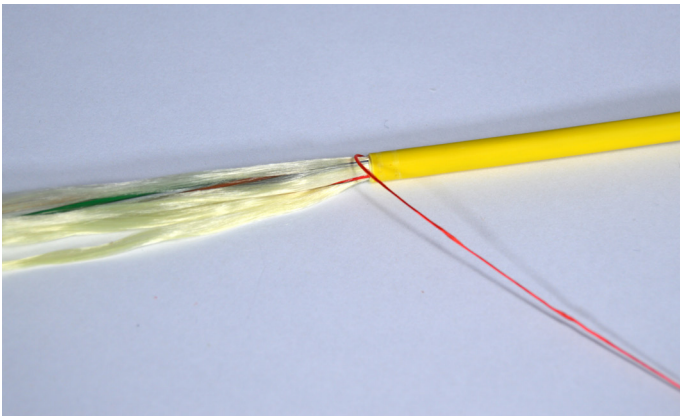
5.1. General cable preparation



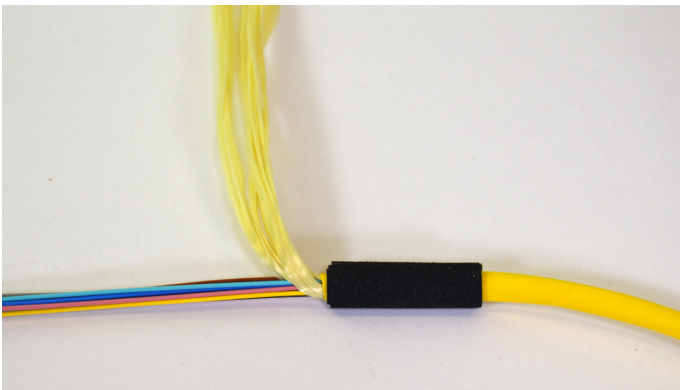
5.1.1. Mark the stripping point on the cable jacket. Make sure that you have at least 2 meters of cable left.



5.1.2. Cut the cable jacket at the marked point and approx. 150 mm from the cable end to get access to the rip cord.

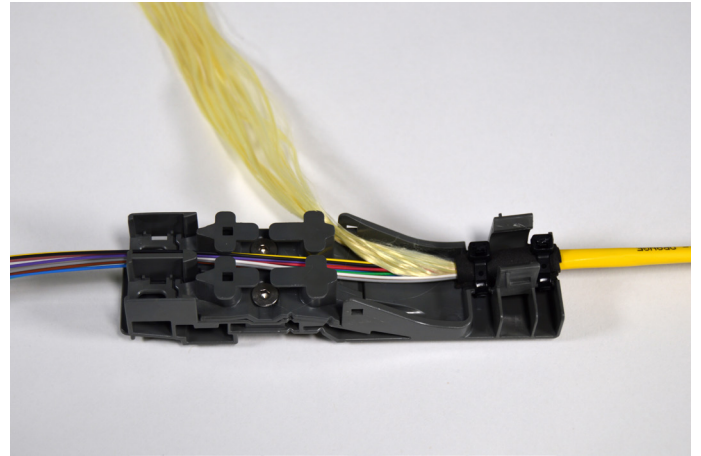


5.1.3. Use the rip cord to strip off the cable jacket.

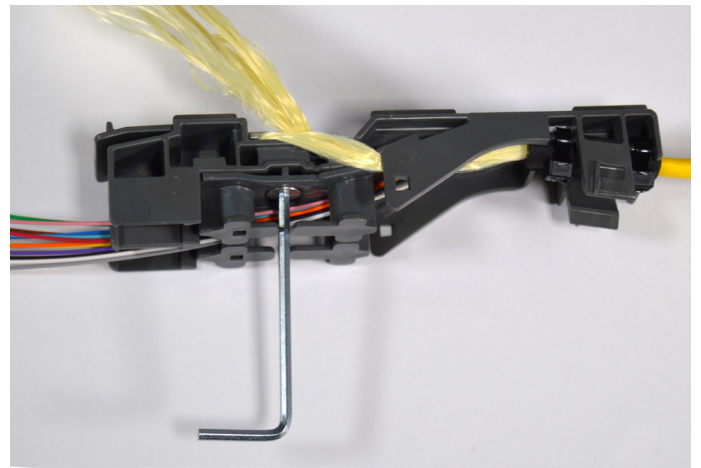


5.1.4. Separate the aramid yarns from the 900 μm . Apply a piece of foam.

5.2. Cable preparation without central strength member

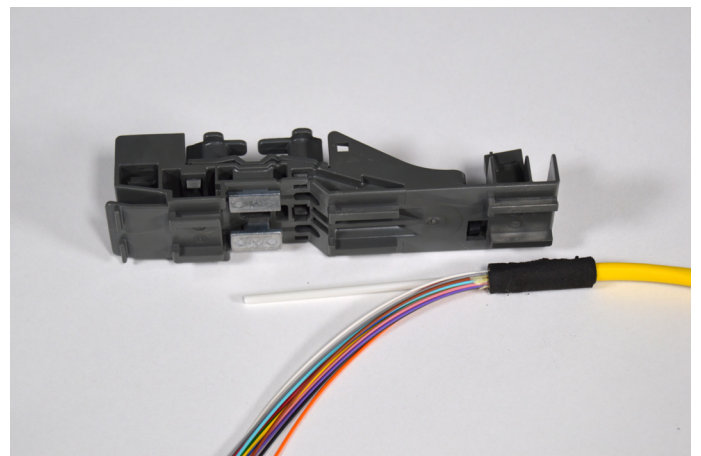


5.2.1. Fix the cable with 2 tie wraps. Route the aramid yarns to the backside of the bracket.

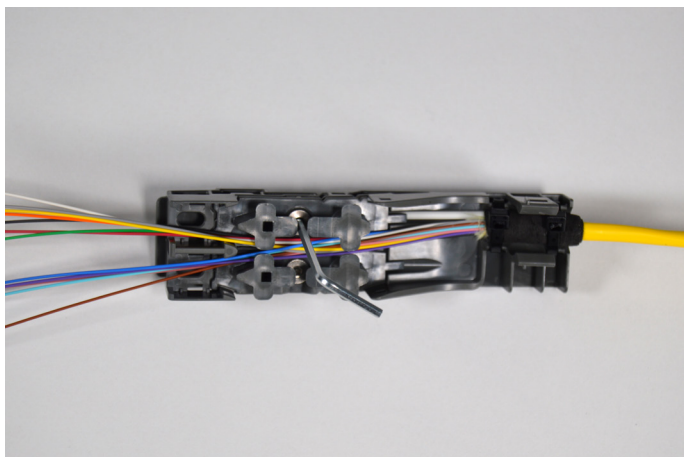


5.2.2. Make several turns around the strength member connector to fix the aramid yarns, by using the allen key.

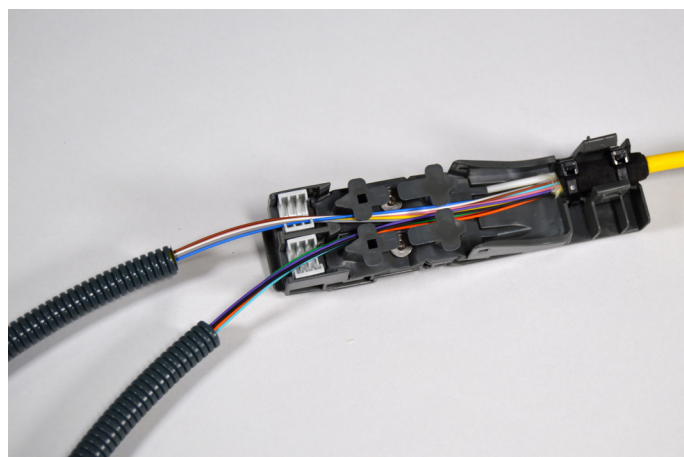
5.3. Cable preparation with central strength member



5.3.1. Cut the strength member on length +/- 70 mm.

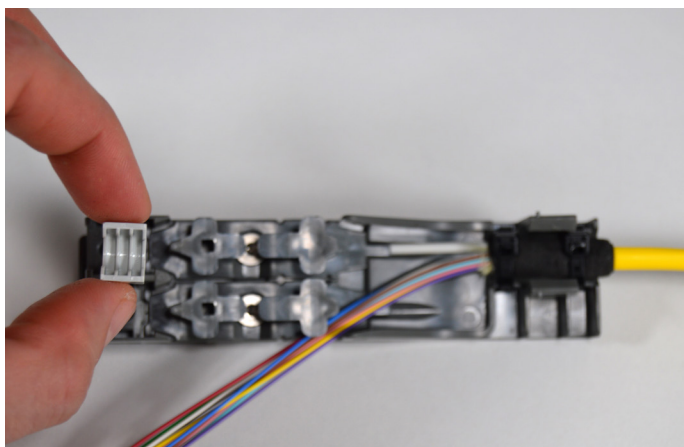


5.3.2. Feed the strength member to the backside. Fix the strength member by using the allen key. Fix the cable with 2 tie wraps and cut them.



6.3. Feed the 900 μm fibers into the flex. Note: The flex tube should be cut to 410mm first (for FACT-xESPL)!

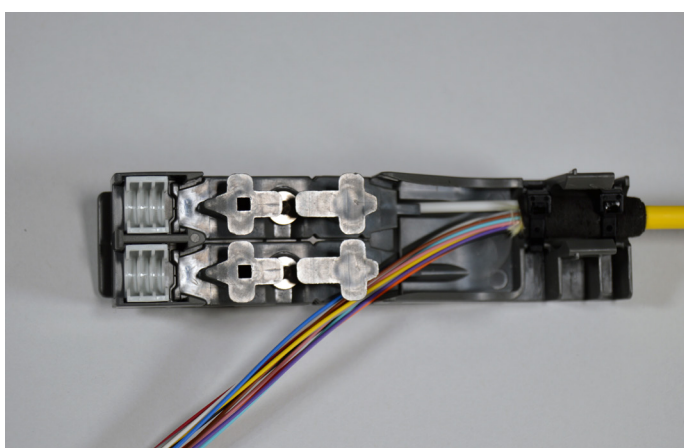
6. Routing and termination on FACT-xESPL (splice element)



6.1. Take a flex tube holder.



6.4. Slide on the CTU bracket. Fix the flex tubes by pressing the flex tube(s) into the flex tube holders.



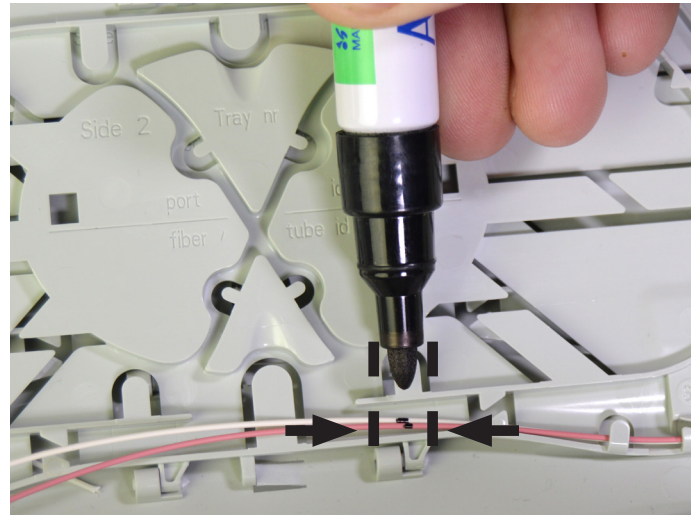
6.2. Install the flex tube holder(s) on the bracket.



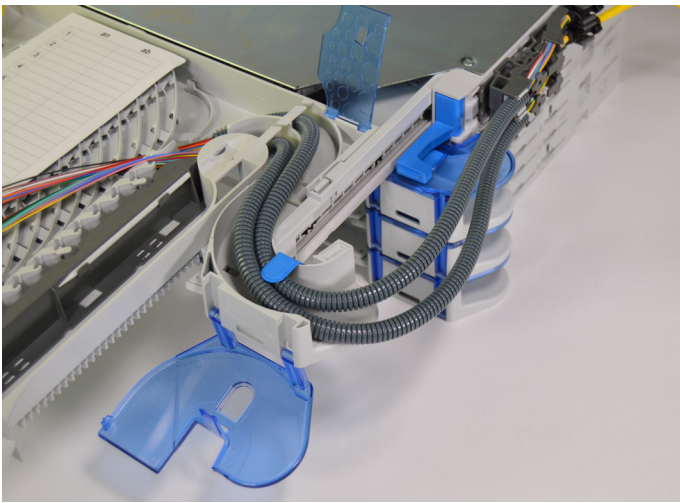
6.5. Ope the lids. Install flex tube holder(s) in the splice tray.



6.6. Guide the flex and the 900 μm fibers to the splice tray. Fix the flex tubes in the flex tube holder.



6.9. Route the 900 μm fiber to the splice tray and mark the stripping point to 250 μm .



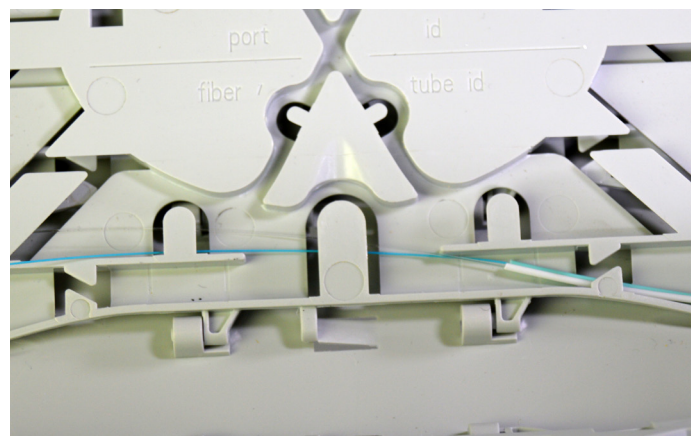
6.7. Overview flex routing without crossing.



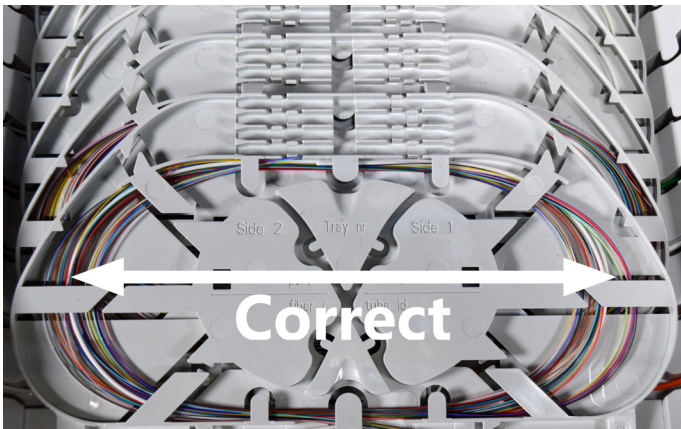
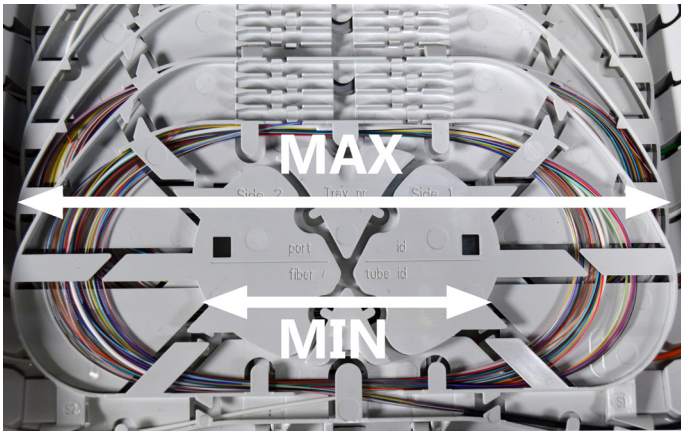
6.10. Strip the 900 μm to 250 μm with a proper tool.



6.8. Route the fibers throughout the groove plate to the dedicated splice trays.

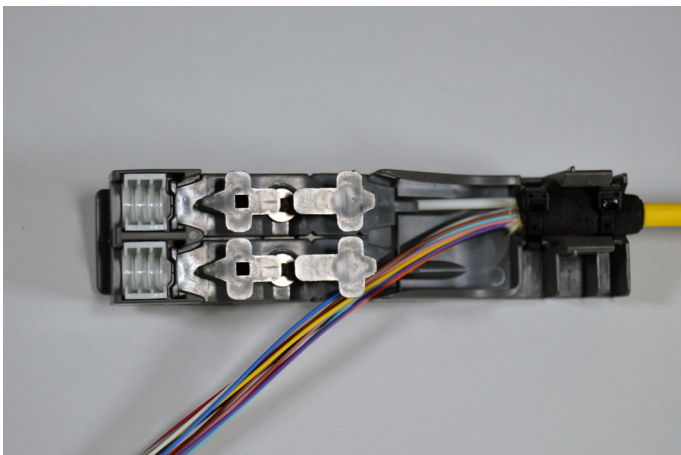


6.11. Check the proper routing of the fiber into the splice tray.



6.12. Pay attention to store the fiber correctly. A properly stored fiber doesn't touch the bend radius limiter on inner or outer side and can move freely.

7. Routing and termination on FACT-xExHP (splice/patch element)



7.1. Install the flex tube holder(s) on the bracket by pressing them in.



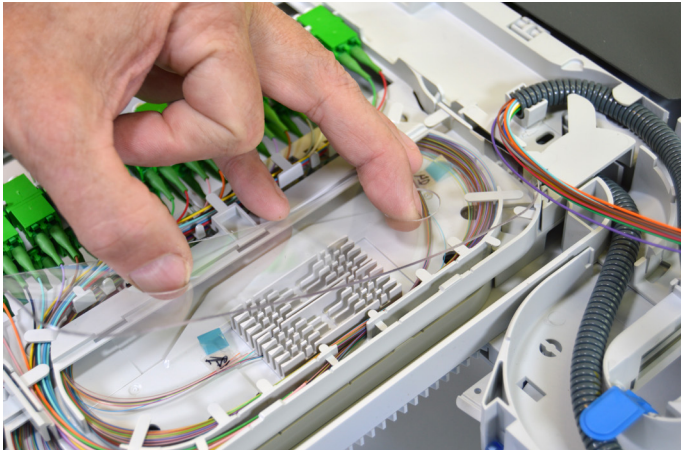
7.2. Install the flex tube holder in the tray.



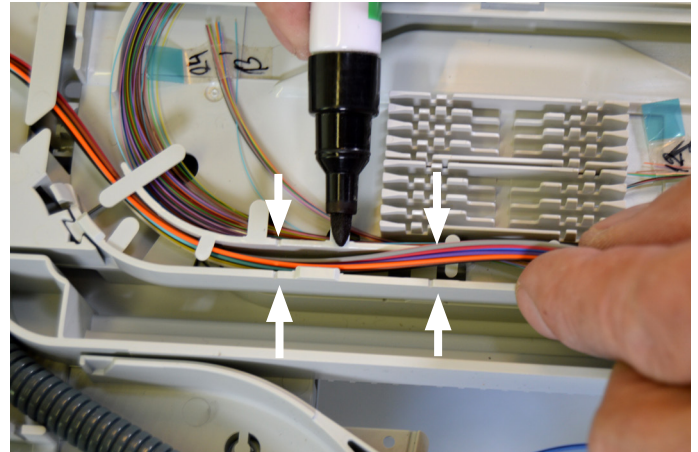
7.3. Feed the flex into the tray. Next, feed the 900 μm fibers towards the splice/patch area.



7.4. Guide the flex tube and push it in the flex tube holder.



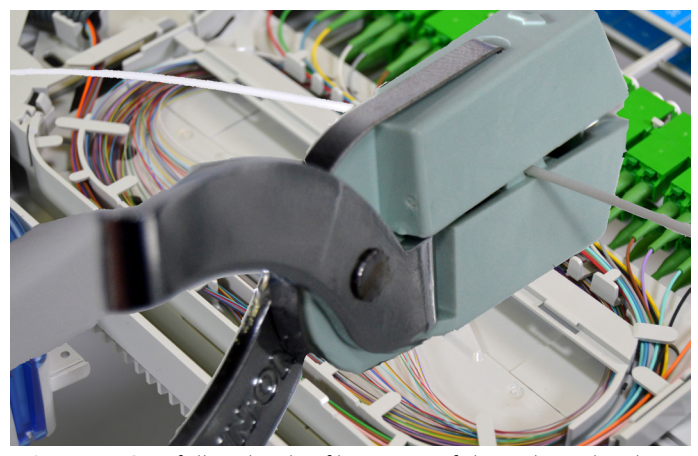
7.5. Remove the transparent cover.



7.8. Route the fibers towards the splice area. Mark these between the V-shaped marks. Strip the marked fibers.



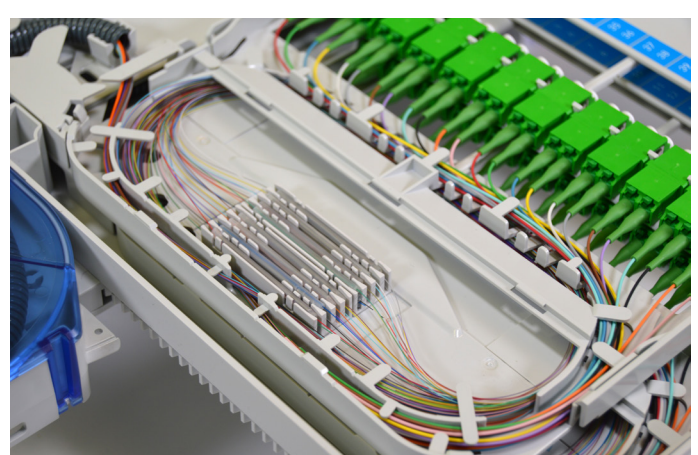
7.6. Close the back lid.



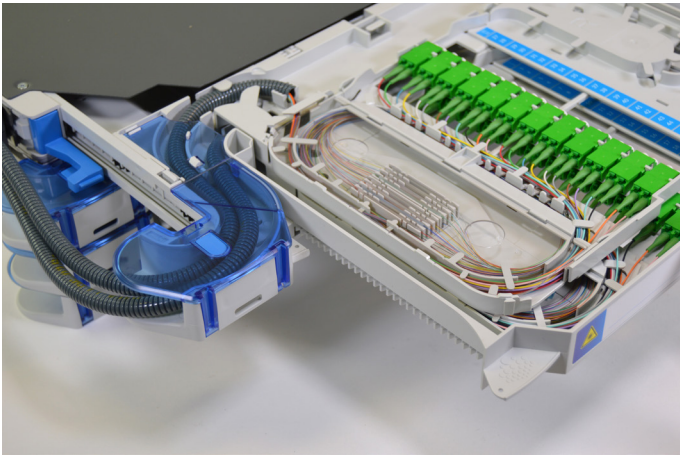
7.9. Carefully take the fibers out of the splice island. Splice the fibers to fibers that you just stripped.



7.7. Close the front lid.



7.10. Put the spliced fibers in the smouv-holder. Route the spliced fibers back in the splice island.



7.11. Reinstall the transparent cover.

8. Trademarks

All trademarks identified by ® or ™ are registered trademarks or trademarks, respectively, of CommScope, Inc. This document is for planning purposes only and is not intended to modify or supplement any specifications or warranties relating to CommScope products or services. CommScope is committed to the highest standards of business integrity and environmental sustainability, with a number of CommScope's facilities across the globe certified in accordance with international standards, including ISO 9001, TL 9000, and ISO 14001.

Further information regarding CommScope's commitment can be found at www.commscope.com/About-Us/Corporate-Responsibility-and-Sustainability.

9. Contact information

Visit our website or contact your local CommScope representative for more information.

For technical assistance, customer service, or to report any missing/damaged parts, visit us at:
<http://www.commscope.com/SupportCenter>

This product may be covered by one or more U.S. patents or their foreign equivalents.
For patents, see www.cs-pat.com