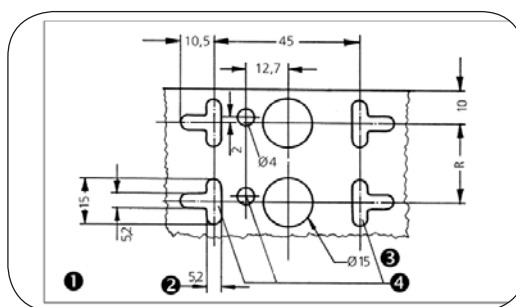
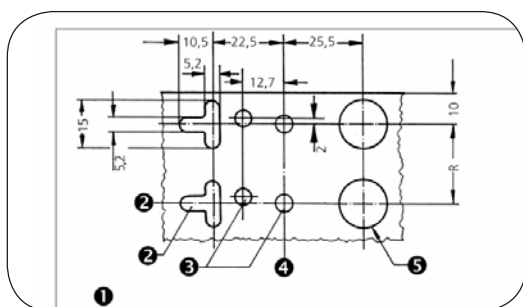
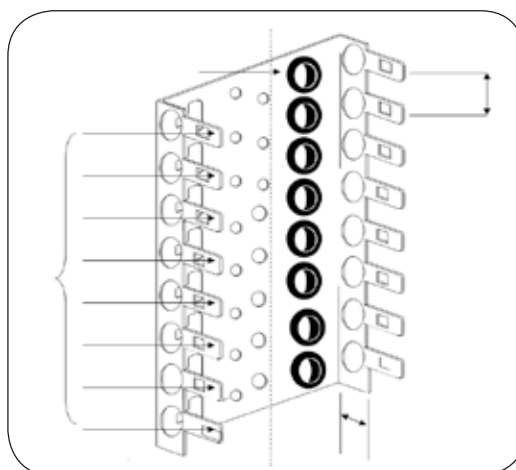
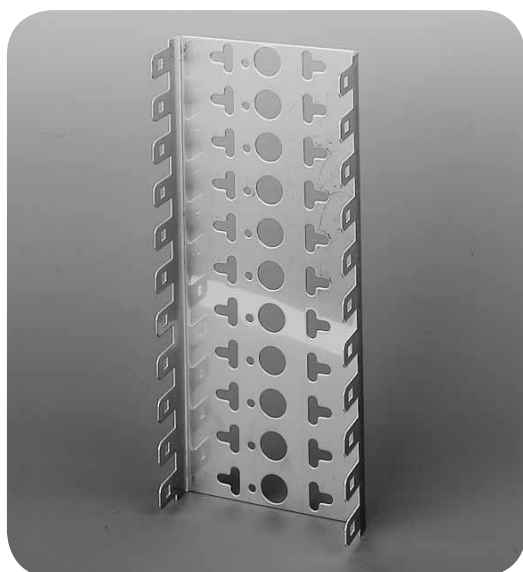


LSA-PLUS® and LSA PROFIL® Modules

Back Mount Frames with 22.5mm and 25.0mm Module Spacing

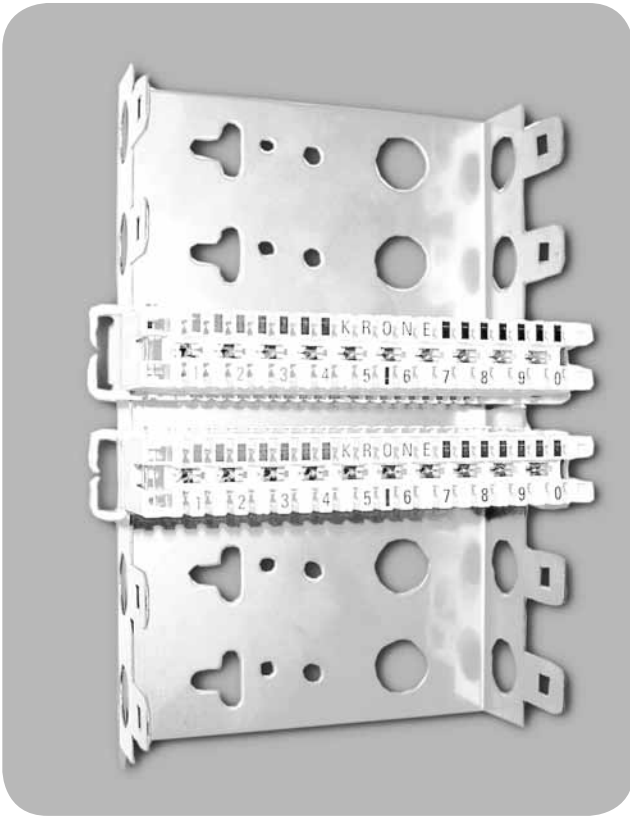


ORDERING INFORMATION

Description	Module spacing	Number of Modules	Catalog Number	
LSA-PLUS Series 2, 10-pair, Depth of cable space/frame: 22.5mm Hole pattern: 1	12mm	1 to 11	6050 3 112-	01...11
	22mm	1 to 22	6050 3 122-	01...22
	30mm	1 to 33	6050 3 130-	01...33
	50mm	10 to 50	6050 3 150-	10...50
LSA-PLUS Series 2, 10-pair, Depth of cable space/frame: 25mm Hole pattern: 2	22mm	1 to 22	6442 3 222-	01...22
	30mm	1 to 33	6442 3 230-	01...33
	50mm	10 to 50	6442 3 250-	10...50
	70mm	21 to 50	6442 3 270-	21...50
LSA-PLUS Series 2, 8-pair, Depth of cable space/frame: 22.5mm Hole pattern: 1	22mm	1 to 16	6054 3 122-	01...16
LSA-PLUS Series 2, 8-pair, Depth of cable space/frame: 25mm Hole pattern: 2	22mm	17	6441 3 222-17	
	30mm	3	6441 3 230-03	
	30mm	9	6441 3 230-09	
	50mm	9	6441 3 250-09	
	50mm	17	6441 3 250-17	
Accessories				
Set of 100 mounting screws (145x16), washers and nuts for back mount frames			6044 2 106-00	

LSA-PLUS® and LSA PROFIL® Modules

Back Mount Frame with 27.5mm Module Spacing

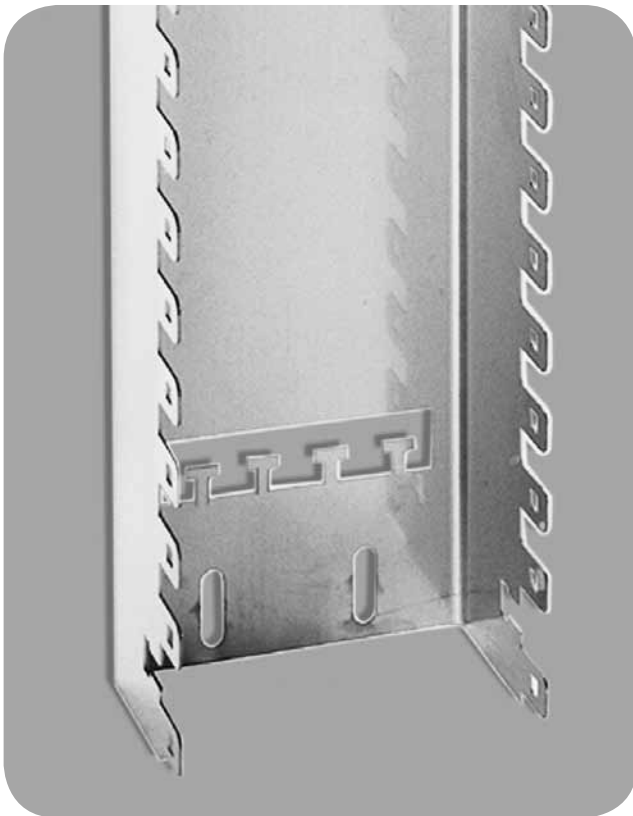


ORDERING INFORMATION

Description	Number of Modules	Depth of Cable Space	Module spacing	Catalog Number
LSA-PLUS Series 2, 10-pair, Depth of cable space/frame: 22mm Hole pattern: 2	4	22mm	27.5mm	6569 3 054-11
	6	22mm	27.5mm	6569 3 054-12
	11	22mm	27.5mm	6569 3 054-13
	13	22mm	27.5mm	6569 3 054-15
LSA-PLUS Series 2, 10-pair, Depth of cable space/frame: 50mm Hole pattern: 2	10 Series 2, 10-pair modules, plus 1 additional module or label holder	50mm	27.5mm	6569 3 054-16
	20 Series 2, 10-pair modules, plus 1 additional module or label holder	50mm	27.5mm	6569 3 054-17
	30 Series 2, 10-pair modules, plus 1 additional module or label holder	50mm	27.5mm	6569 3 054-18

LSA-PLUS® and LSA PROFIL® Modules

Back Mount Frame



FEATURES & BENEFITS

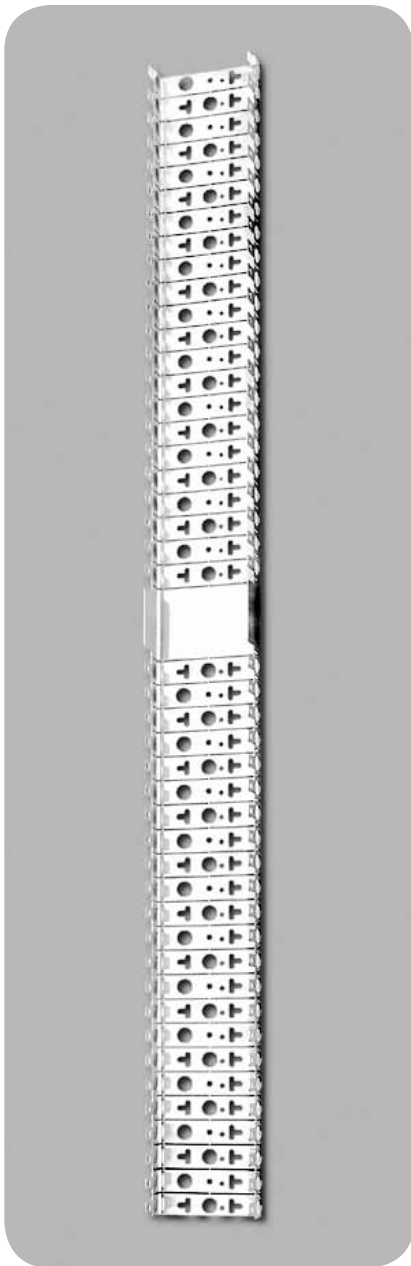
- Accommodates from 10 to 40 Series 2, 10-pair modules, plus an additional termination module, label holder or earth-wire module
- Blocks of 100 pairs separated from each other (spacing between groups of 10 modules is 30mm)
- Overall width: 104.5mm
- Module spacing: 22.5mm
- Depth of cable space/frame: 50mm

ORDERING INFORMATION

Number of Modules	Depth of Cable Space	Module spacing	Dimensions (Length x Width)	Catalog Number
10 Series 2, 10-pair modules, plus 1 additional module or label holder	50mm	22.5mm	263mm x 104.5mm	5267 3 585-00
20 Series 2, 10-pair modules, plus 1 additional module or label holder	50mm	22.5mm	496mm x 104.5mm	5267 3 585-01
30 Series 2, 10-pair modules, plus 1 additional module or label holder	50mm	22.5mm	728mm x 104.5mm	5267 3 585-02
40 Series 2, 10-pair modules, plus 1 additional module or label holder	50mm	22.5mm	961mm x 104.5mm	5267 3 585-03

LSA-PLUS® and LSA PROFIL® Modules

Modular Back Mount Frame



FEATURES & BENEFITS

- Total of 45 module mounting slots in two sections (one with 22 slots, one with 23)
- Five pre-stressed break-off points between the module's slits can be cut with a saw, allowing the frame to be cut on-site to the desired length
- Back of the frame contains both hole patterns 1 and 2
- Use of the maximum (45) mounting slots is recommended when a total of 100 pairs are to be terminated on a frame with a cable space depth of 22mm

ORDERING INFORMATION

Module Type	Depth of Cable Space	Module Spacing	Catalog Number
Series 2, 8-pair	22mm	22.5mm	6973 1 200-02
Series 2, 10-pair	22mm	22.5mm	6973 1 210-02
	22mm	25mm	6973 1 210-12
	30mm	25mm	6973 1 210-13
	50mm	22.5mm	6973 1 210-04
	50mm	25mm	6973 1 210-14
	50mm	27.5mm	6973 1 210-24

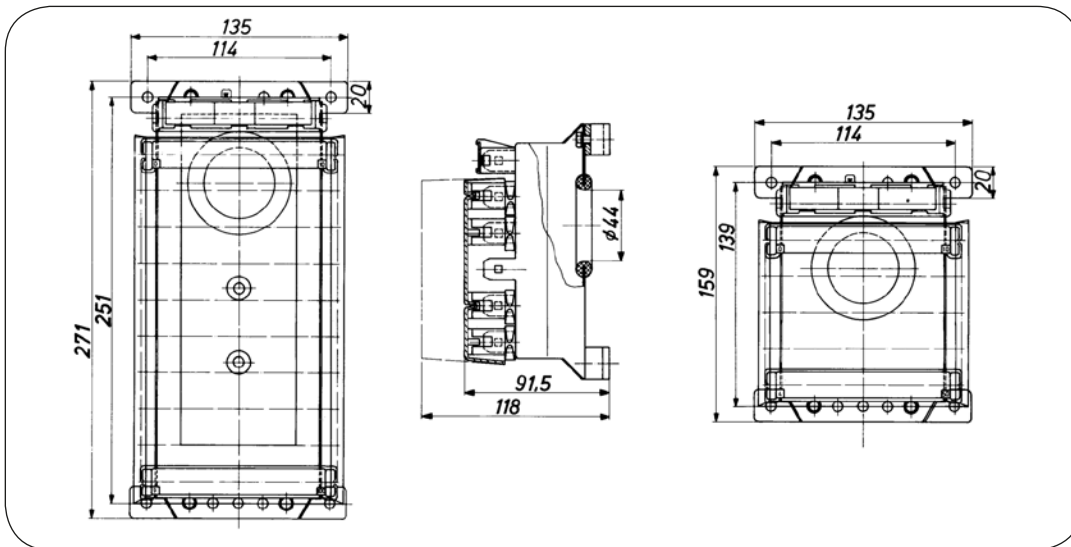
LSA-PLUS® and LSA PROFIL® Modules

Back Mount Frame for Cable Head Installations



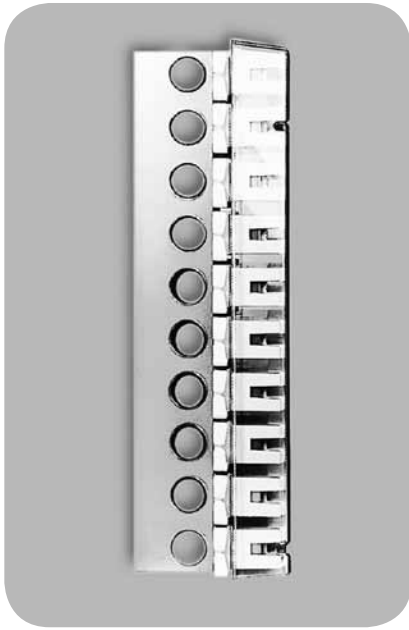
FEATURES & BENEFITS

- For installations with limited or narrow space
- Two sizes, accommodating five or ten LSA-PLUS® Series 2, 10-pair modules plus an additional termination module, label holder or earth-wire module
- No mounting materials (screws, nuts, washers) are included



ORDERING INFORMATION

Description	Catalog Number
Back mount frame for Series 2, 10-pair modules, plus 1 additional module or label holder	
Size 1, total of 11 mounting spaces	6092 2 024-01
Size 2, total of 6 mounting spaces	6042 2 001-00



FEATURES & BENEFITS

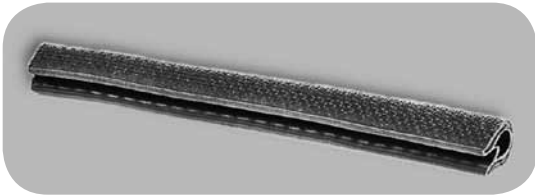
- Transparent cover protects LSA-PLUS® Series 2, 10-pair modules from dust and accidental disturbance of terminated cable
- The deeper version allows installation of overvoltage protection magazine

ORDERING INFORMATION

Description	Catalog Number
Shallow dust cover	
100 pairs	6092 3 016-00
50 pairs	6092 3 016-01
10 pairs Note: if more than 1 cover is used, module spacing must be greater than 22.5mm	6089 2 097-00
Deep dust cover. Allows installation of overvoltage protection magazine	
100 pairs	6092 3 034-10
50 pairs	6092 3 034-11

LSA-PLUS® and LSA PROFIL® Modules

Mounting Accessories for Back Mount Frames



ORDERING INFORMATION

Description	Catalog Number
Cable clamp kit for Series 2 cable head back mount frame Includes 4 clamps, 1 sheath contact screws, 1 clip	6092 2 017-00
Edge protection strip. Placed over unused positions in back mount frame	
120mm	6092 3 017-00
60mm	6092 3 017-01
Cable protection rings for 15mm diameter cables. Mount on rear of back mount frame to protect cable insulation	6050 3 044-00