

MFPS Fiber Optic panel, 19 inch, 1RU, 48 fibers/HU, splice/patch, SMOUV/right, 48 SC/APC, grade C

- Compatible with most common cable types: loose tube, central core, slotted core
- Suitable for cabinets and POP locations
- Various available panel heights to support termination counts from 12 to 288
- Simple wrap-around design for easy fiber routing
- Supports pigtail diameters of 1.2 to 2.4 mm

## Product Classification

<b>Product Series</b>	MFPS
<b>Product Type</b>	Fiber patch/splice panel
<b>Regional Availability</b>	EMEA

## Construction Materials

<b>Fiber Mode</b>	Singlemode
<b>Fiber Type</b>	G.657.A1
<b>Finish</b>	Powder coated
<b>Material Type</b>	Ethylene-propylene (EP)   Polyethylene terephthalate (PET)

## Dimensions

<b>Depth</b>	279.91 mm   11.02 in
<b>Height</b>	44.45 mm   1.75 in
<b>Width</b>	482.60 mm   19.00 in

## Environmental Specifications

<b>Flammability Rating</b>	UL 94 V-0
<b>Operating Temperature</b>	-40 °C to +70 °C (-40 °F to +158 °F)
<b>Storage Temperature</b>	-20 °C to +85 °C (-4 °F to +176 °F)

## General Specifications

<b>Rack Units</b>	1.0
<b>Shelf Movement</b>	Hinged
<b>Color</b>	Gray
<b>Color, front</b>	Gray
<b>Door Type, front</b>	Compression latch   Hinged
<b>Functionality</b>	Patching   Splicing
<b>Includes</b>	Mounting hardware
<b>Interface Feature, front</b>	APC

<b>Interface, front</b>	SC
<b>Package Quantity</b>	1
<b>Pigtail Assembly Type</b>	12-fiber, stranded
<b>Pigtails Included, quantity</b>	4
<b>Rack Type</b>	EIA 19 in
<b>Splicing Type</b>	Heat shrink, single fiber fusion
<b>Total Ports, quantity</b>	48
<b>Transmission Standards</b>	ETSI EN 300 019-1-3   IEC 61300-3-30

## Mechanical Specifications

<b>Cable Exit Location</b>	Side
<b>Patch Cord Entry Location</b>	Front, right side

## Optical Performance

<b>Performance Grade</b>	Standard C grade
--------------------------	------------------

## Outline Drawing

MFPS Capacities		48		72	96
Connector Type		SC	LC	LC	LC Adapter Pack
19 inch	1HU	48	48	72	96
	2HU	96	96	144	192
	2.8 HU	144	144	216	288

**Outline Drawing** Used as an image placeholder

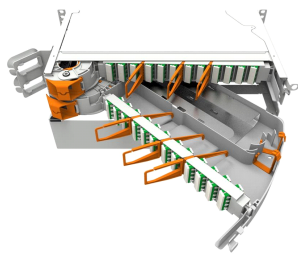
## Regulatory Compliance/Certifications

<b>Agency</b>	<b>Classification</b>
RoHS 2011/65/EU	Compliant
ISO 9001:2015	Designed, manufactured and/or distributed under this quality management system



\* Footnotes

**Performance Grade**      Guarantee to meet IEC 61755-1 Random Mating requirement



MFPS Fiber Optic panel, 19 inch, 2RU, 48 fibers/HU, patch/patch, left, 96 SC/APC, grade C

- Compatible with most common cable types: loose tube, central core, slotted core
- Suitable for cabinets and POP locations
- Various available panel heights to support termination counts from 12 to 288
- Simple wrap-around design for easy fiber routing
- Supports pigtail diameters of 1.2 to 2.4 mm

## Product Classification

<b>Product Series</b>	MFPS
<b>Product Type</b>	Fiber patch panel
<b>Regional Availability</b>	EMEA

## Construction Materials

<b>Fiber Mode</b>	Singlemode
<b>Fiber Type</b>	G.657.A1
<b>Finish</b>	Powder coated
<b>Material Type</b>	Ethylene-propylene (EP)   Polyethylene terephthalate (PET)

## Dimensions

<b>Depth</b>	279.91 mm   11.02 in
<b>Height</b>	88.90 mm   3.50 in
<b>Width</b>	482.60 mm   19.00 in

## Environmental Specifications

<b>Flammability Rating</b>	UL 94 V-0
<b>Operating Temperature</b>	-40 °C to +70 °C (-40 °F to +158 °F)
<b>Storage Temperature</b>	-20 °C to +85 °C (-4 °F to +176 °F)

## General Specifications

<b>Rack Units</b>	2.0
<b>Shelf Movement</b>	Hinged
<b>Color</b>	Gray
<b>Color, front</b>	Gray
<b>Door Type, front</b>	Compression latch   Hinged
<b>Functionality</b>	Patching
<b>Includes</b>	Mounting hardware
<b>Interface Feature, front</b>	APC

<b>Interface, front</b>	SC
<b>Package Quantity</b>	1
<b>Rack Type</b>	EIA 19 in
<b>Total Ports, quantity</b>	96
<b>Transmission Standards</b>	ETSI EN 300 019-1-3   IEC 61300-3-30

## Mechanical Specifications

<b>Cable Exit Location</b>	Side
<b>Patch Cord Entry Location</b>	Front, left side

## Optical Performance

<b>Performance Grade</b>	Standard C grade
--------------------------	------------------

## Outline Drawing

MFPS Capacities		48		72	96
Connector Type		SC	LC	LC	LC Adapter Pack
19 inch	1HU	48	48	72	96
	2HU	96	96	144	192
	2.8 HU	144	144	216	288

**Outline Drawing** Used as an image placeholder

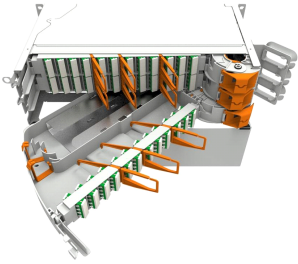
## Regulatory Compliance/Certifications

<b>Agency</b>	<b>Classification</b>
RoHS 2011/65/EU	Compliant
ISO 9001:2015	Designed, manufactured and/or distributed under this quality management system



\* Footnotes

**Performance Grade**      Guarantee to meet IEC 61755-1 Random Mating requirement



MFPS Fiber Optic panel, 19 inch, 2.8RU, 48 fibers/HU, patch/patch, right, 144 SC/APC, grade C

- Compatible with most common cable types: loose tube, central core, slotted core
- Suitable for cabinets and POP locations
- Various available panel heights to support termination counts from 12 to 288
- Simple wrap-around design for easy fiber routing
- Supports pigtail diameters of 1.2 to 2.4 mm

## Product Classification

<b>Product Series</b>	MFPS
<b>Product Type</b>	Fiber patch panel
<b>Regional Availability</b>	EMEA

## Construction Materials

<b>Fiber Mode</b>	Singlemode
<b>Fiber Type</b>	G.657.A1
<b>Finish</b>	Powder coated
<b>Material Type</b>	Ethylene-propylene (EP)   Polyethylene terephthalate (PET)

## Dimensions

<b>Depth</b>	279.91 mm   11.02 in
<b>Height</b>	125.00 mm   4.92 in
<b>Width</b>	482.60 mm   19.00 in

## Environmental Specifications

<b>Flammability Rating</b>	UL 94 V-0
<b>Operating Temperature</b>	-40 °C to +70 °C (-40 °F to +158 °F)
<b>Storage Temperature</b>	-20 °C to +85 °C (-4 °F to +176 °F)

## General Specifications

<b>Rack Units</b>	2.8
<b>Shelf Movement</b>	Hinged
<b>Color</b>	Gray
<b>Color, front</b>	Gray
<b>Door Type, front</b>	Compression latch   Hinged
<b>Functionality</b>	Patching
<b>Includes</b>	Mounting hardware
<b>Interface Feature, front</b>	APC

<b>Interface, front</b>	SC
<b>Package Quantity</b>	1
<b>Rack Type</b>	EIA 19 in
<b>Total Ports, quantity</b>	144
<b>Transmission Standards</b>	ETSI EN 300 019-1-3   IEC 61300-3-30

## Mechanical Specifications

<b>Cable Exit Location</b>	Side
<b>Patch Cord Entry Location</b>	Front, right side

## Optical Performance

<b>Performance Grade</b>	Standard C grade
--------------------------	------------------

## Outline Drawing

MFPS Capacities		48		72	96
Connector Type		SC	LC	LC	LC Adapter Pack
19 inch	1HU	48	48	72	96
	2HU	96	96	144	192
	2.8 HU	144	144	216	288

**Outline Drawing** Used as an image placeholder

## Regulatory Compliance/Certifications

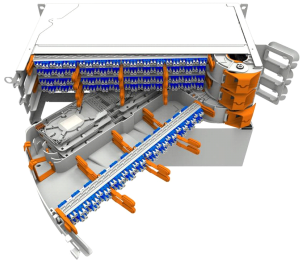
<b>Agency</b>	<b>Classification</b>
RoHS 2011/65/EU	Compliant
ISO 9001:2015	Designed, manufactured and/or distributed under this quality management system





\* Footnotes

**Performance Grade**      Guarantee to meet IEC 61755-1 Random Mating requirement



MFPS Fiber Optic panel, 19 inch, 2.8RU, 96 fibers/HU, splice/patch, SMOUV/right, 288 LC/UPC, grade C

- Compatible with most common cable types: loose tube, central core, slotted core
- Suitable for cabinets and POP locations
- Various available panel heights to support termination counts from 12 to 288
- Simple wrap-around design for easy fiber routing
- Supports pigtail diameters of 1.2 to 2.4 mm

## Product Classification

<b>Product Series</b>	MFPS
<b>Product Type</b>	Fiber patch/splice panel
<b>Regional Availability</b>	EMEA

## Construction Materials

<b>Fiber Mode</b>	Singlemode
<b>Fiber Type</b>	G.657.A1
<b>Finish</b>	Powder coated
<b>Material Type</b>	Ethylene-propylene (EP)   Polyethylene terephthalate (PET)

## Dimensions

<b>Depth</b>	279.91 mm   11.02 in
<b>Height</b>	125.00 mm   4.92 in
<b>Width</b>	482.60 mm   19.00 in

## Environmental Specifications

<b>Flammability Rating</b>	UL 94 V-0
<b>Operating Temperature</b>	-40 °C to +70 °C (-40 °F to +158 °F)
<b>Storage Temperature</b>	-20 °C to +85 °C (-4 °F to +176 °F)

## General Specifications

<b>Rack Units</b>	2.8
<b>Shelf Movement</b>	Hinged
<b>Color</b>	Gray
<b>Color, front</b>	Gray
<b>Door Type, front</b>	Compression latch   Hinged
<b>Functionality</b>	Patching   Splicing
<b>Includes</b>	Mounting hardware
<b>Interface Feature, front</b>	Standard

<b>Interface, front</b>	LC
<b>Package Quantity</b>	1
<b>Pigtail Assembly Type</b>	12-fiber, stranded
<b>Pigtails Included, quantity</b>	24
<b>Rack Type</b>	EIA 19 in
<b>Splicing Type</b>	Heat shrink, single fiber fusion
<b>Total Ports, quantity</b>	288
<b>Transmission Standards</b>	ETSI EN 300 019-1-3   IEC 61300-3-30

## Mechanical Specifications

<b>Cable Exit Location</b>	Side
<b>Patch Cord Entry Location</b>	Front, right side

## Optical Performance

<b>Performance Grade</b>	Standard C grade
--------------------------	------------------

## Outline Drawing

MFPS Capacities		48		72	96
Connector Type		SC	LC	LC	LC Adapter Pack
19 inch	1HU	48	48	72	96
	2HU	96	96	144	192
	2.8 HU	144	144	216	288

**Outline Drawing** Used as an image placeholder

## Regulatory Compliance/Certifications

<b>Agency</b>	<b>Classification</b>
RoHS 2011/65/EU	Compliant
ISO 9001:2015	Designed, manufactured and/or distributed under this quality management system



\* Footnotes

**Performance Grade**      Guarantee to meet IEC 61755-1 Random Mating requirement