

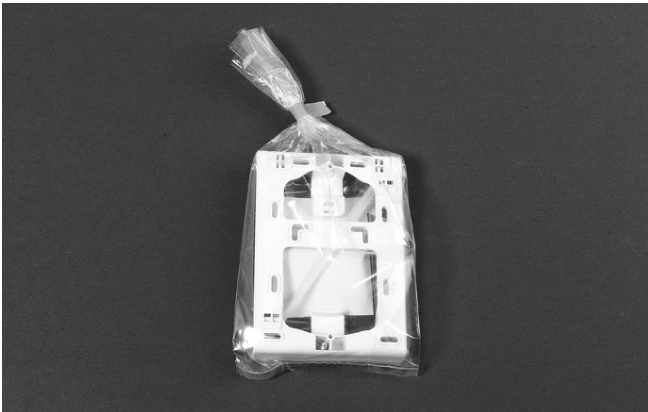
Wall plug FTTH

1 Kit content



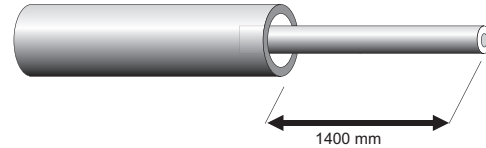
- Cover
- Faceplate
- Wall plug tray
- Strain relief cover
- Cover screw
- Retainer

1.1 Extension plate kit



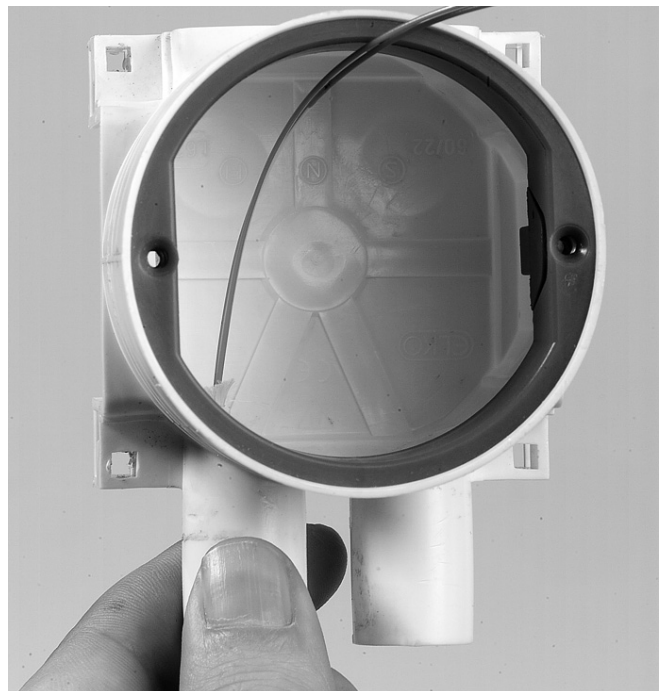
- Extension plate
- Screws
- Loose tube fixation part
- Foam
- Tie wraps

1.2 Cable preparation



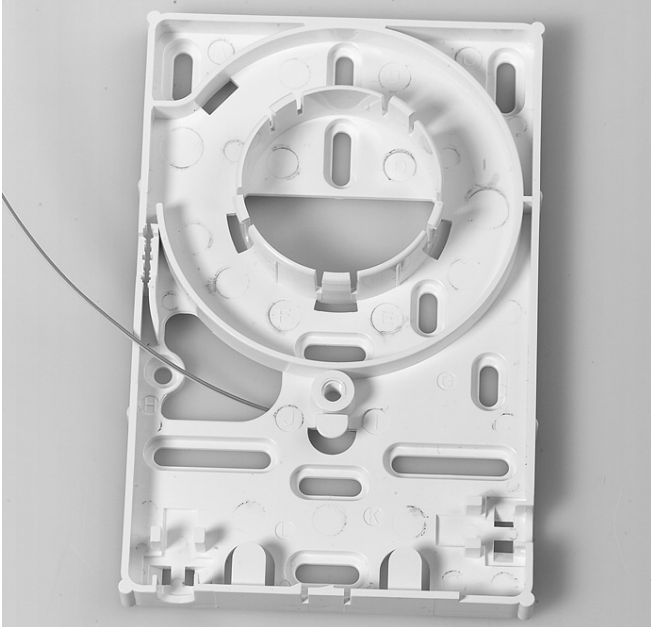
- 1.2.1 Remove the outer jacket over a distance of 1.4 m.

Insert box

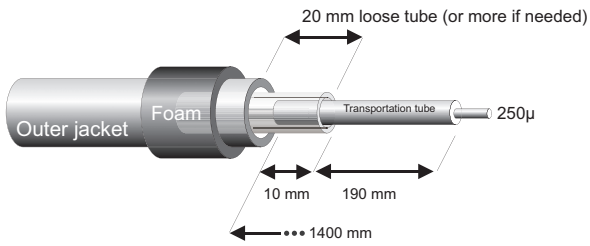


- 1.2.2 In case of an insert box, try to strip the outer jacket as close as possible to the entrance of the insert box.

Face plate



Face plate (no insert box, fiber only)



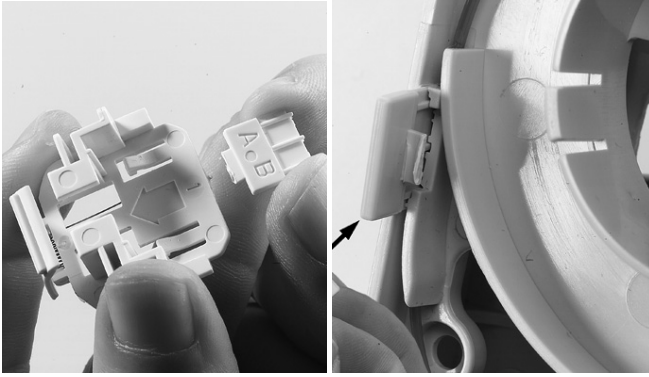
1.2.3 Mount the face plate onto the insert box using the appropriate holes. Guide the fibers through the correct hole as shown in the picture. In case of 250 μ build up the fiber to 900 μ with the transportation tube.

Note: check the bending of the fibers in the insert box.

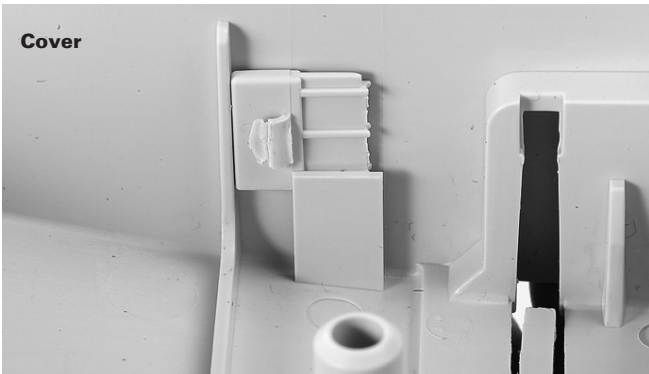


1.2.4 Feeder cable directly terminated onto the face plate (fiber only). Maximum cable diameter is 6 mm. Cable preparation, see 1.2.3.

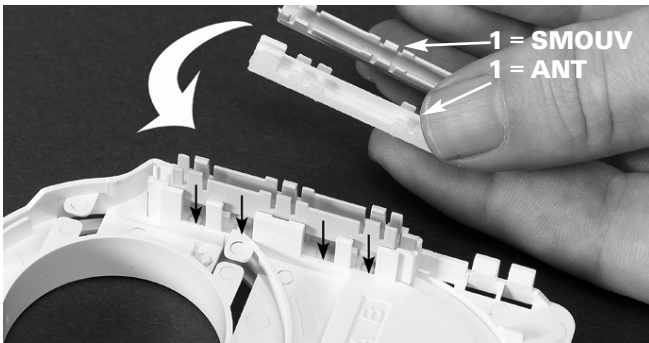
Strain relief



1.2.5 Secure the 900 μ m fiber into the strain relief compartment by using the strain relief tool.

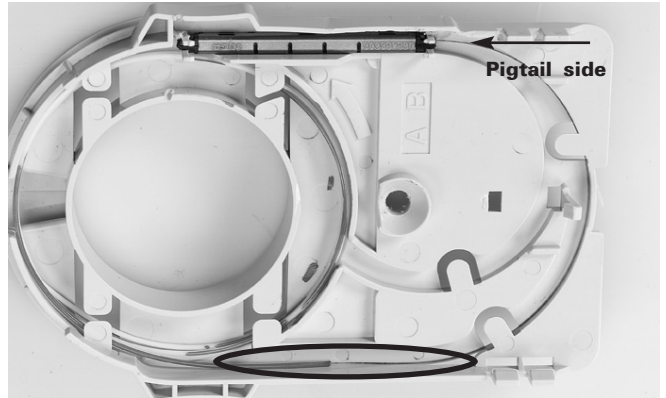
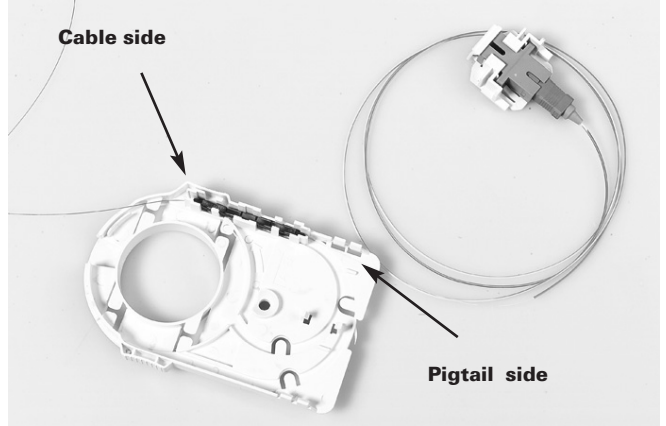


1.2.6 Place the strain relief tool inside the cover as shown.

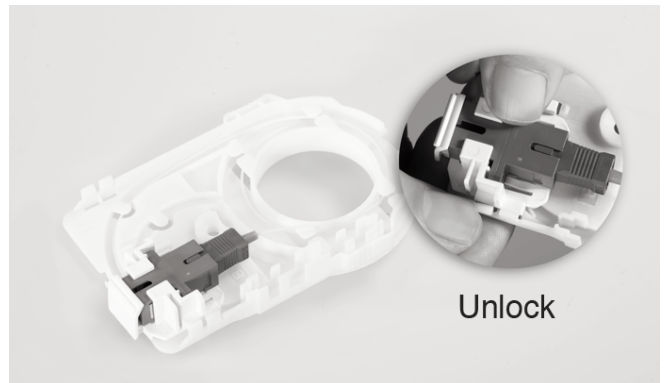
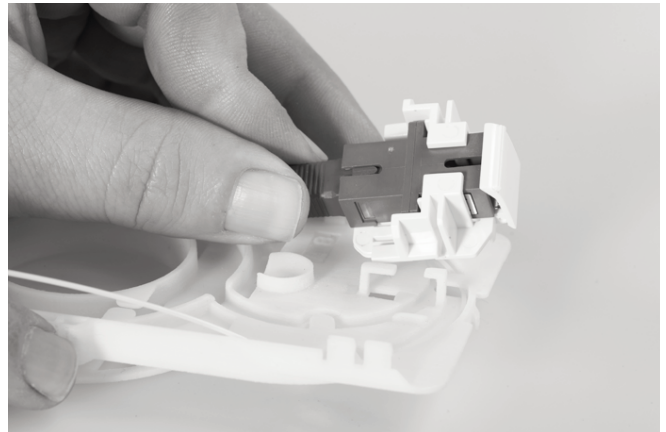


1.2.7 Insert for universal splice holder for SMOUV or ANT.

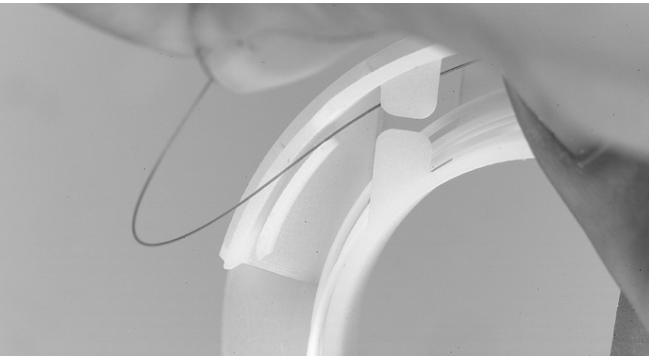
Splicing: feeder cable to pigtail (max. 1 m, min. 0.65m)



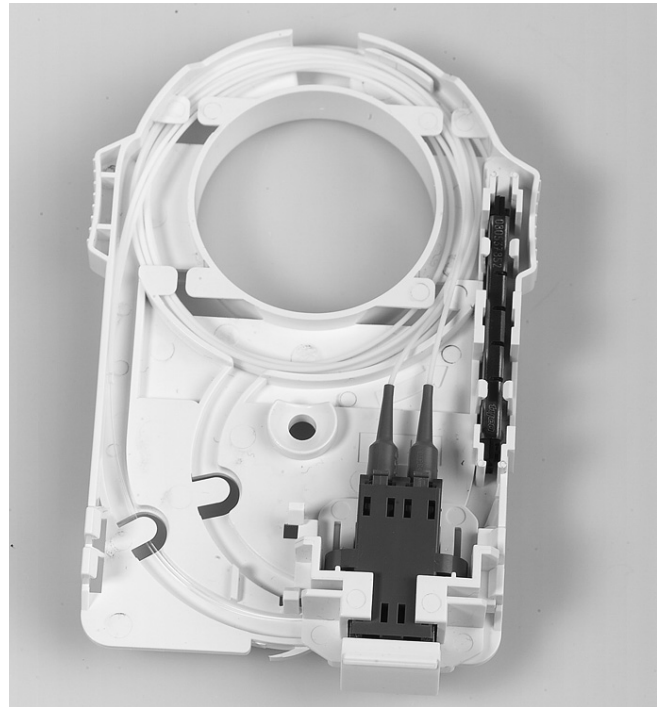
1.2.8 Strip the semi-tight pigtail for 160 mm and then splice to the feeder cable. Install the splice into the splice holder and route the pigtail side first. Transition of 250 μ m to 900 μ m should be positioned in this straight line.



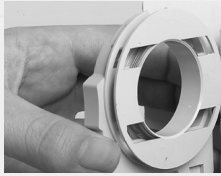
1.2.9 Install the retainer onto the tray. Route the fibers into the tray.



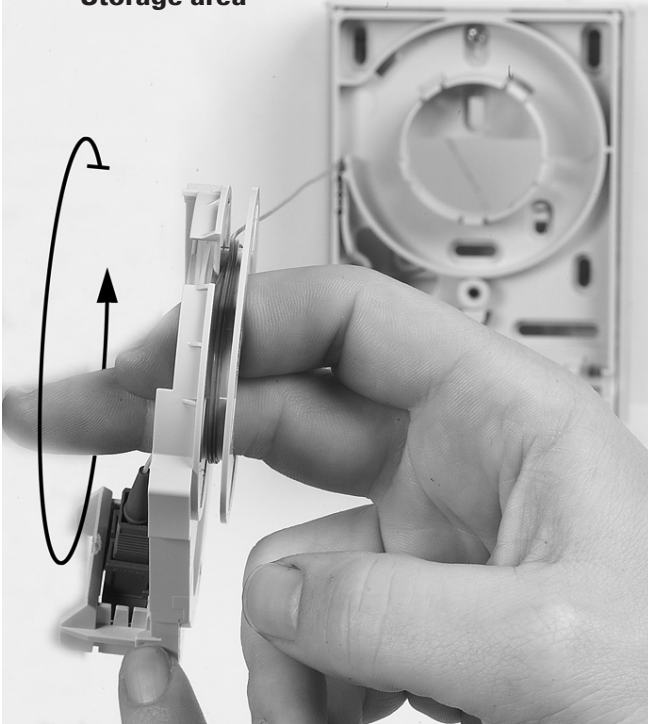
1.2.10 Route the feeder cable fiber to the backside of the tray as shown in the pictures.



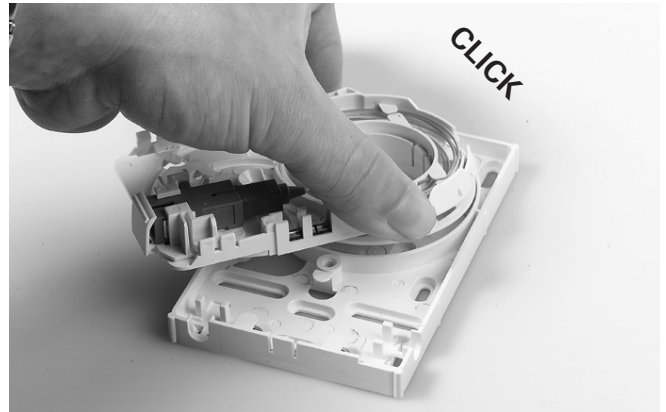
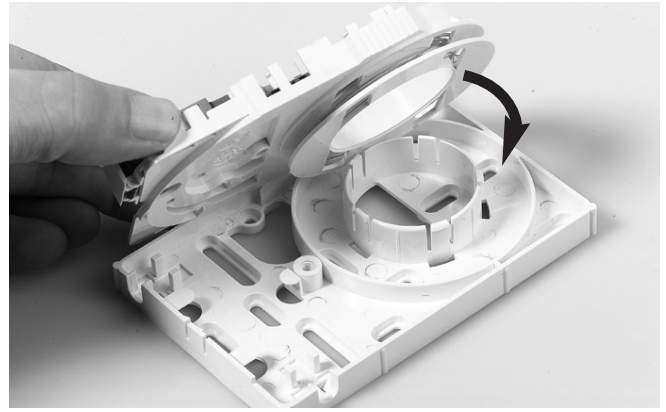
1.2.11 In case of LC duplex, route the feeder cable fiber of the second splice to the backside of the tray as shown (**not** underneath the lip and **not** in the groove).



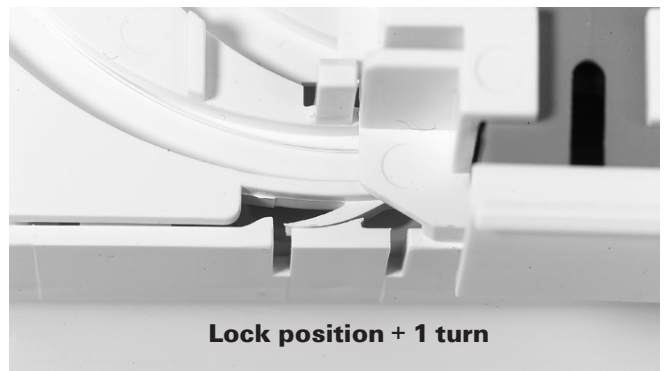
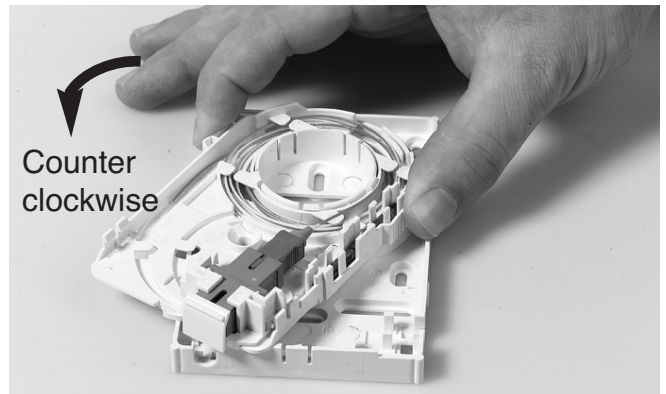
Storage area



1.2.12 Rotate the tray towards the wall keeping the fibers under low tension so that fibers will be stored inside the storage area.

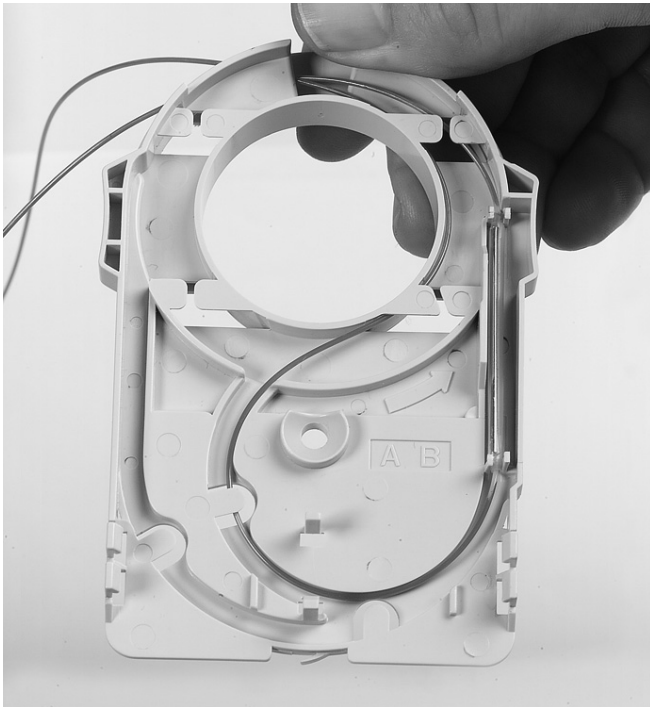


1.2.13 Rotate until the tray is touching the faceplate. Still keeping the fibers under low tension when installing the tray onto the face plate, so that fibers will stay inside the storage area during the installation.

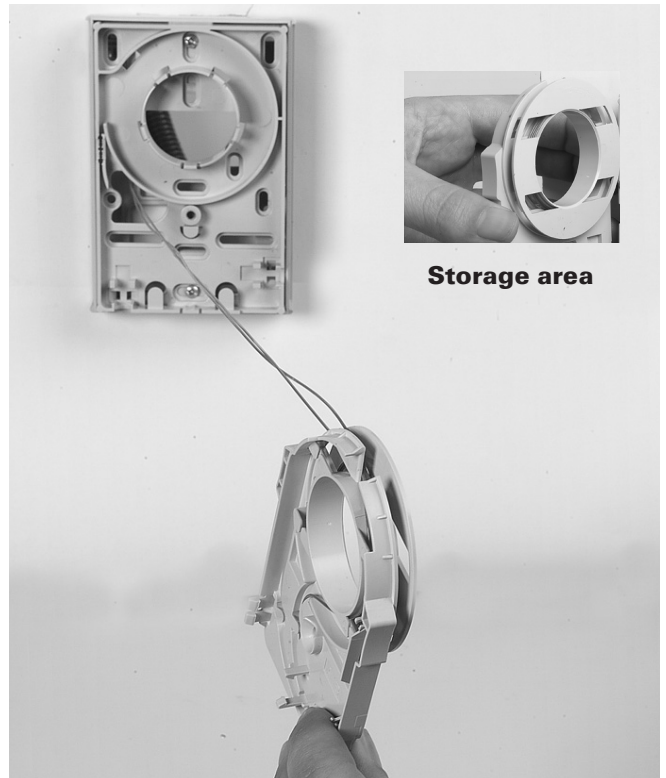
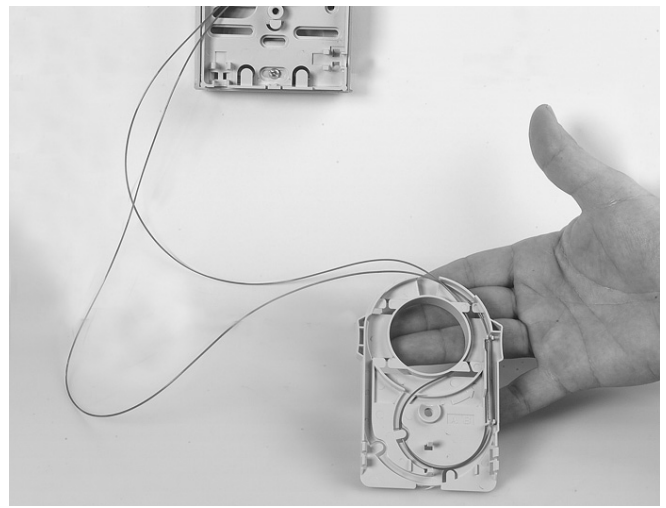


1.2.14 Turn the tray counter clockwise to the lock position and then 1 extra turn counter clockwise again to the lock position.
Note: do not turn clockwise !

Splicing: feeder cable to feeder cable



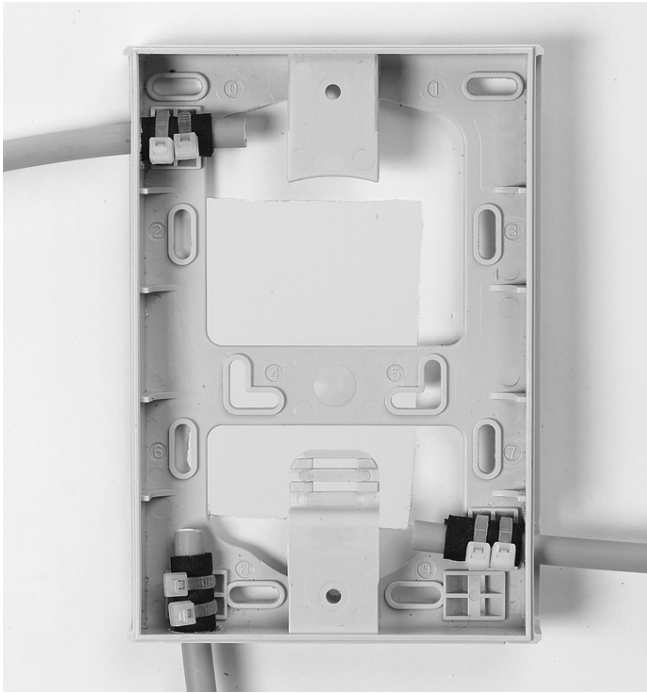
1.2.15 Routing inside the tray.



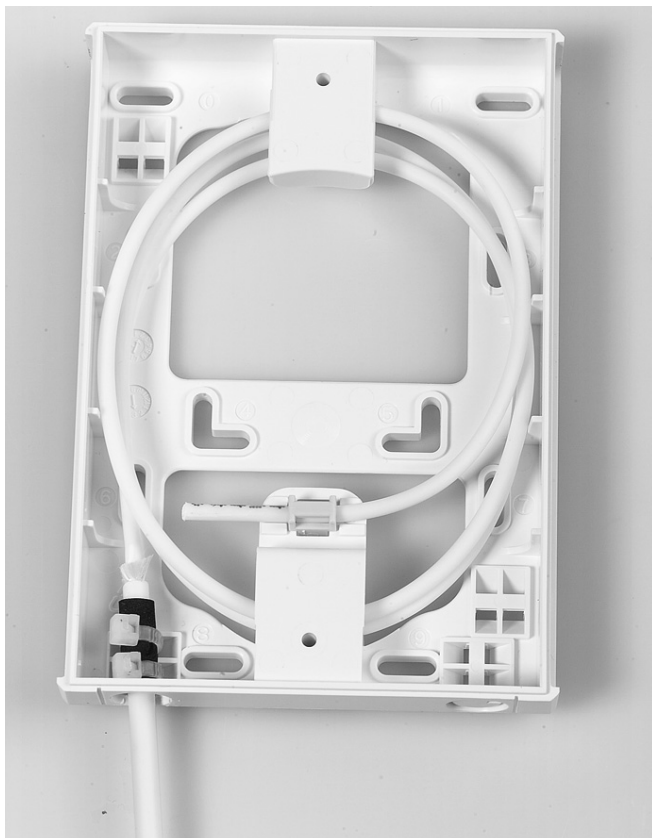
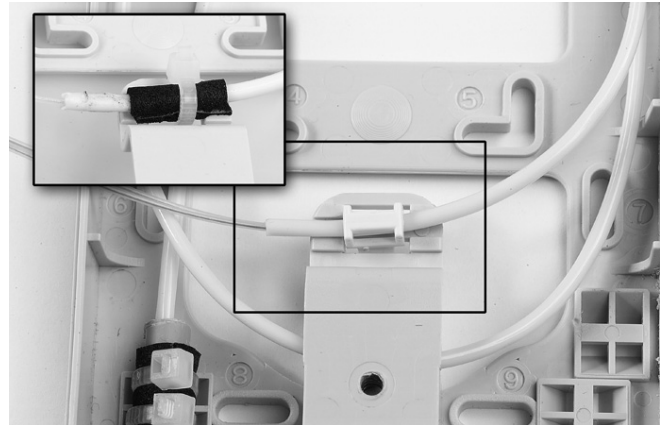
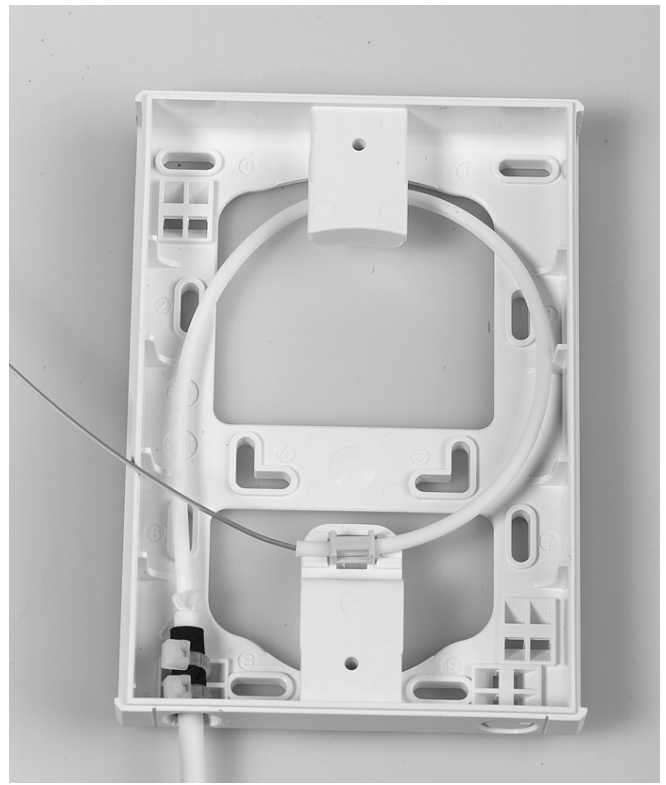
1.2.16 Make sure both fibers have the same length by routing already the longest fiber 1 turn inside the storage area. Secure and rotate both fibers, see paragraph **Strain relief** and 1.2.5 til 1.2.14.

Extension plate

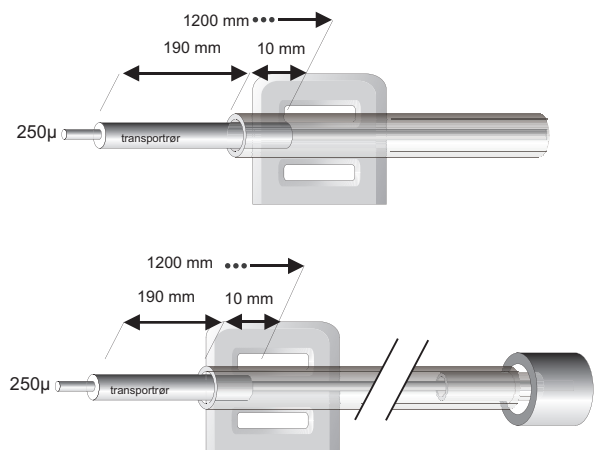
Note: needed in case of: - cable bigger than 6 mm
- loose tube storage



1.2.17 Possible entries when the cable is installed onto the wall. Max. cable diameter is 9 mm.



1.2.19 Fiber cable: storage of loose tube.
Max. 1.4 m of loose tube storage (diam. 2.7 mm).



1.2.20 Route the loose tube to the tube holder, using the loose tube holder or tie wrap and foam for fixation. Depending the cable type choose further preparation with help of these drawings. Further installation: see paragraph **Strain relief**.



1.2.21 Route the fibers with the transportation tube up to the strain relief.

Closing the box



1.2.22 Install the cover onto the box.



1.2.23 For duplex LC connectors or SC connectors, both with shutter.

Tyco Electronics Raychem bvba

Diestsesteenweg 692
B-3010 Kessel-Lo, Belgium
Tel.: 32-16-351 011
Fax: 32-16-351 697
www.telecomnetworks.com
www.te.com

SMOUV, TE (logo) and TE Connectivity are trademarks of the TE Connectivity group of companies and its licensors.

The information given herein, including drawings, illustrations and schematics which are intended for illustration purposes only, is believed to be reliable. However, TE Connectivity makes no warranties as to its accuracy or completeness and disclaims any liability in connection with its use. TE Connectivity' obligations shall only be as set forth in TE Connectivity' Standard Terms and Conditions of Sale for this product and in no case will TE Connectivity be liable for any incidental, indirect or consequential damages arising out of the sale, resale, use or misuse of the product. Users of TE Connectivity products should make their own evaluation to determine the suitability of each such product for the specific application.